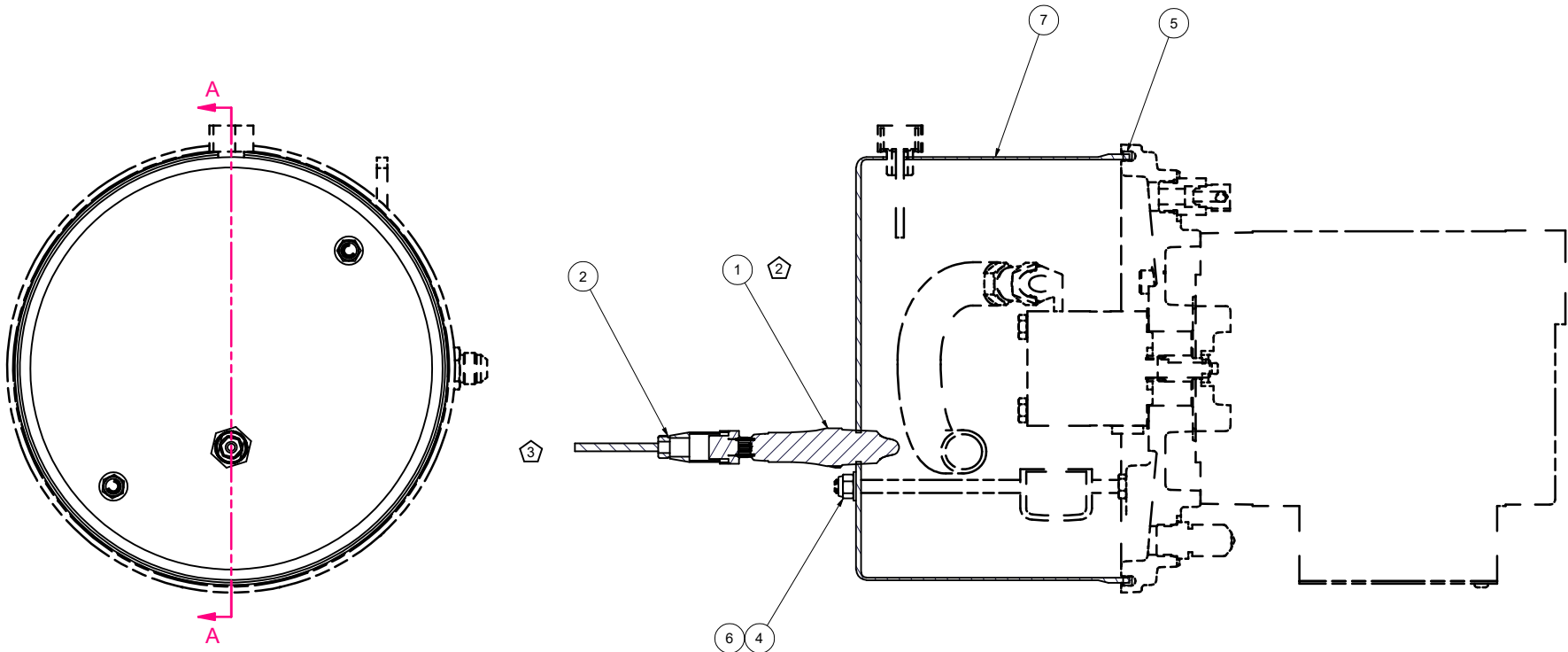
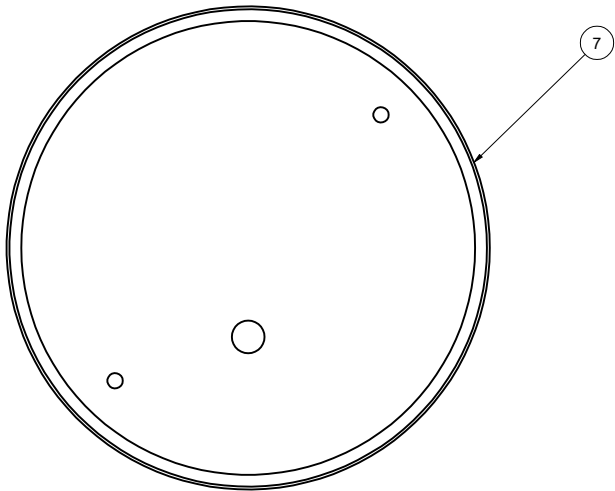
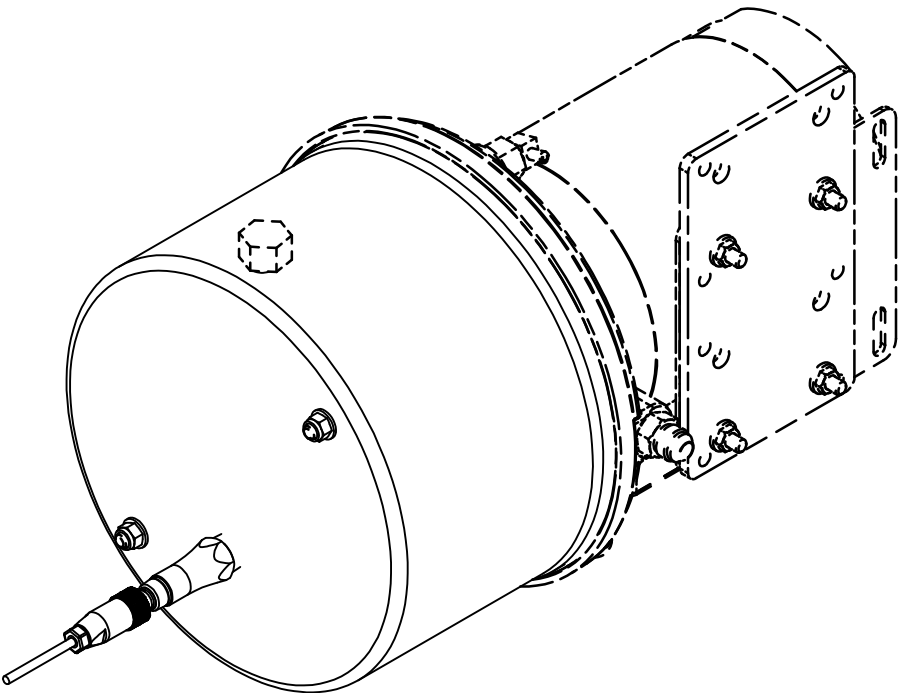


BILL OF MATERIAL				
ITEM	QTY	PART NO.	DESCRIPTION	SIZE
1	1	0961-0642	SENSOR,FLUID,COOKPOT	12VDC, INTRUSIVE, 1/2 NPT
2	1	0961-0648	CABLE,5M LG,M12 PLUG	FLYING LEADS, 22/4 AWG, 30 V
3	1	1026-0005	INSTALLATION INSTRUCTIONS	IDOCK SENSOR KITS
4	2	2101-0039	NYLON LOCK NUT	5/16-18 UNC
5	1	9301-0027	O-RING	10 DIA X 0.21
6	2	9301-0029	SEAL, THREAD, 7500 0.3125	
7	1	9302-0002	RESERVOIR,COOKPOT,SENSOR HOLE	8.5QT X 10.0 DIA X 6.5 DEEP
	1	9302-0003	RESERVOIR,COOKPOT,SENSOR HOLE	12QT X 10.0 DIA X 9.0 DEEP

1




SECTION A-A



- NOTES:**
1. MOUNT SENSOR INTO COOKPOT 9302-0002 OR 9302-0003
 2. USE A THREAD SEALANT TAPE BEFORE ASSEMBLING SENSOR INTO RESERVOIR TO PREVENT OIL LEAKS
 3. ROUTE CABLE TO J-BOX LOCATED IN THE DOCK LEVELER PIT. J-BOX AND WIRING TO THE CONTROL BOX IS SUPPLIED BY OTHERS.

ELECTRICAL NOTES AND SCHEMATIC:
FLUID LEVEL SENSOR CONNECTED TO CONTROLLER AS FOLLOWS:
BRN - TERMINAL STRIP 20
BLU - TERMINAL STRIP 21
WHT - EXPANSION BOARD DC INPUT 1 (TERMINAL 24)

WIRE # & COLOR	FLUID LEVEL SENSOR
20 — BRN	12 VDC
21 — BLU	0 VDC
34 — WHT	NC SIGNAL

A	19-112	10/16/19	ADD ELECTRICAL NOTES & SCHEMATIC
-	18-051	10/17/18	RELEASED
			POWERAMP MCGUIRE DLM
S Y S T E M S			
<i>L o a d i n g D o c k E q u i p m e n t</i>			
KIT,FLUID SENSOR ASSY			
12VDC, COOKPOT RESERVOIR			
MATERIAL			STOCK NO.
DRAWN BY BDK		CHECKED BY	DATE 6/4/2018
TOLERANCES (UNLESS OTHERWISE NOTED)		DRAWING NO.	
FRACTIONAL: ± 1/32"		7155-0002	
DECIMAL:			
.00 = ± .01"			
.000 = ± .005"			
ANGULAR: ± 1°			

This print is the property of Systems, LLC and represents a proprietary process in which Systems, LLC retains any and all patent and other rights, including without limitation, the right to make, use, sell, or otherwise dispose of this print. No part of this print may be reproduced, stored in a retrieval system, or transmitted in any form or by any means, electronic, mechanical, photocopying, recording, or by any information storage and retrieval system, without permission in writing from Systems, LLC. Rev A - SEN 10-2018

iDock Sensor Retrofit Kit • Installation Overview



Always read and understand the Owner's/User's Manual and become thoroughly familiar with the equipment and its controls before installing or operating equipment. **Failure to read and understand owner's/user's manual may result in voiding of warranty, damage to equipment, death or serious injury!**

iDock controllers with a 7141-0360 Expansion Board installed can retrofit sensors with a program update (via main board exchange or SD card update as required) and the following kit(s):

Fluid Sensor Retrofit Kits

Fluid Sensor Kit Options	
Part Number	Description
7155-0001	Kit, Fluid Sensor, Plastic Reservoir
7155-0002*	Kit, Fluid Sensor, Cookpot Reservoir*

Note: Kits require the installer to provide field wiring (3-wire, 18-gauge minimum) between the fluid sensor and iDock controller to complete installation. Follow all local and applicable national electrical codes.

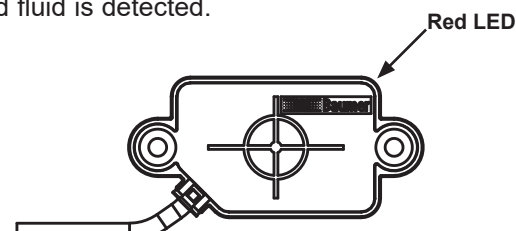
***Kit 7155-0002 additionally requires the installer to provide thread sealant tape and hydraulic fluid meeting or exceeding specification MIL-H-5606 to complete installation.**

Installation Overview

1. Ensure work area is barricaded and proper Lock Out/Tag Out procedures are performed during service.
2. Locate the hydraulic fluid reservoir of the motor/pump assembly where the sensor will be installed.
3. Install fluid level sensor to reservoir.
 - Units with plastic reservoirs have an externally mounted sensor that requires no disassembly to install. Refer to print 7155-0001.
 - Units with cookpot reservoirs require disassembly to install the provided pre-drilled reservoir and sensor. Refer to print 7155-0002. Use thread sealant tape where sensor enters reservoir. When assembly is complete, refill reservoir with appropriate amount of hydraulic fluid.
4. Connect fluid sensor wiring to electrical junction box in dock leveler pit or on wall near CentraPower unit.
5. Connect field wires to appropriate terminals in iDock control box. Refer to job-specific iDock wiring diagram for information as specific wiring may vary.
6. Restore power to equipment and verify operation of sensors:
 - Kit 7155-0001 sensor will illuminate a red light when powered and fluid is detected.
 - Kit 7155-0002 sensor will illuminate a blue light when powered and fluid is detected.



7155-0002 sensor



7155-0001 sensor

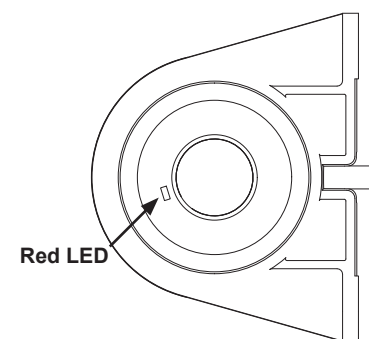
Other Sensor Retrofit Kits

Other Sensor Retrofit Kit Options	
Part Number	Description
7155-0007*	Kit, Vehicle Detection Assembly*
7155-0008*	Kit, Forklift Sensor Assembly
7155-0009	Kit, Leveler Stored Retrofit
7155-0010*	Kit, Door Open Sensor*
7155-0011*	Kit, Door Closed Sensor*

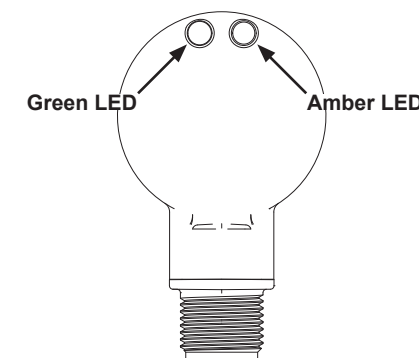
***Vehicle Detection Assembly, Forklift and Door Sensor kits require the installer to provide mounting hardware.**

Installation Overview

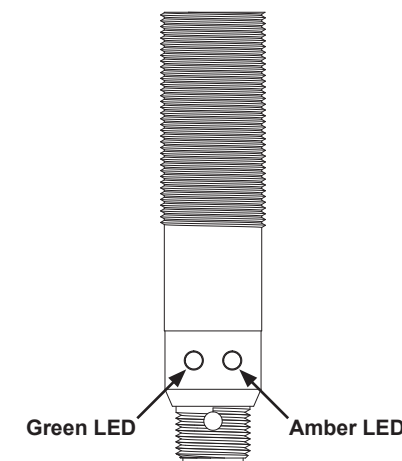
1. Ensure work area is barricaded and proper Lock Out/Tag Out procedures are performed during service.
2. Install sensors at specified location(s). Avoid mounting sensor eyes in direct sunlight for proper performance; some installations may require additional shielding (provided by others).
 - Kits require the installer to drill and install mounting hardware provided by others. Refer to corresponding print for any given kit number.
 - Forklift Sensor Kits can be mounted directly to pre-drilled holes in separately purchased Allied Solutions Track Guard LS. Refer to Track Guard LS Owner's/User's Manual for instructions.
3. Connect sensor wires to appropriate terminals in iDock control box. Refer to iDock wiring diagram supplied with control panel for information.
4. Restore power to equipment and verify operation of sensors:
 - Kit 7155-0007 sensor will illuminate a dim red light when powered and a bright red light when an object is detected. To adjust sensor detection range, follow instructions on print 7155-0007.
 - All other kit sensors will illuminate a green light when powered and an amber light when the sensor is detecting its own reflection. If amber light is flashing, adjust sensor as needed until light is steady on.



7155-0007 sensor

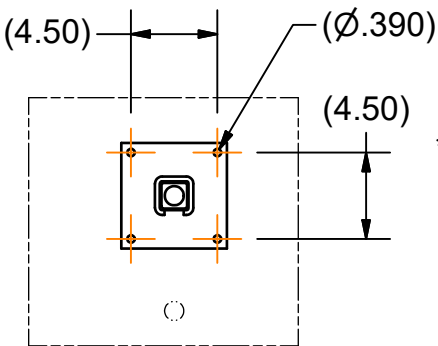
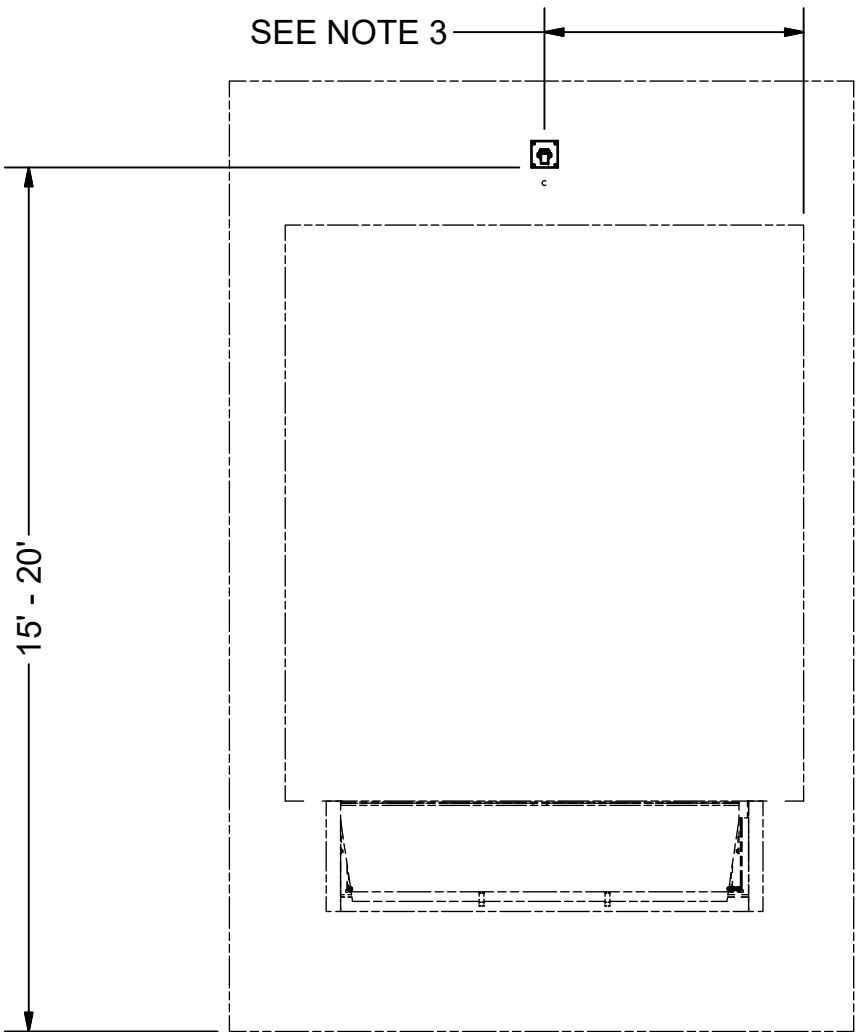
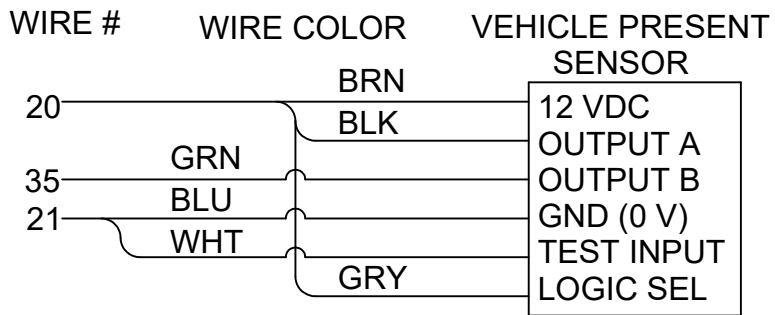


7155-0008 and 7155-0011 sensors



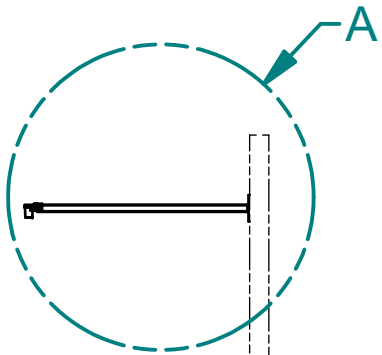
7155-0009 and 7155-0010 sensors

- NOTES:
- 1. ENSURE SLOT IS FACING DOWN WHEN MOUNTING.
 - 2. HARDWARE TO MOUNT BRACKET TO WALL IS SUPPLIED BY OTHERS.
 - 3. POSITION SENSOR BRACKET IN CENTER OF DOOR OPENING.
IF REQUIRED, SENSOR BRACKET POSITION MAY BE OFFSET UP TO 12" OFF CENTER OF THE DOOR OPENING.
 - 4. VEHICLE PRESENT SENSOR CONNECTED TO CONTROL PANEL
 - BRN, BLK, & GRY - TERMINAL STRIP 20
 - BLU & WHT - TERMINAL STRIP 21
 - GRN - EXPANSION BOARD DC INPUT 2 - TERMINAL 25 (WIRE #35)



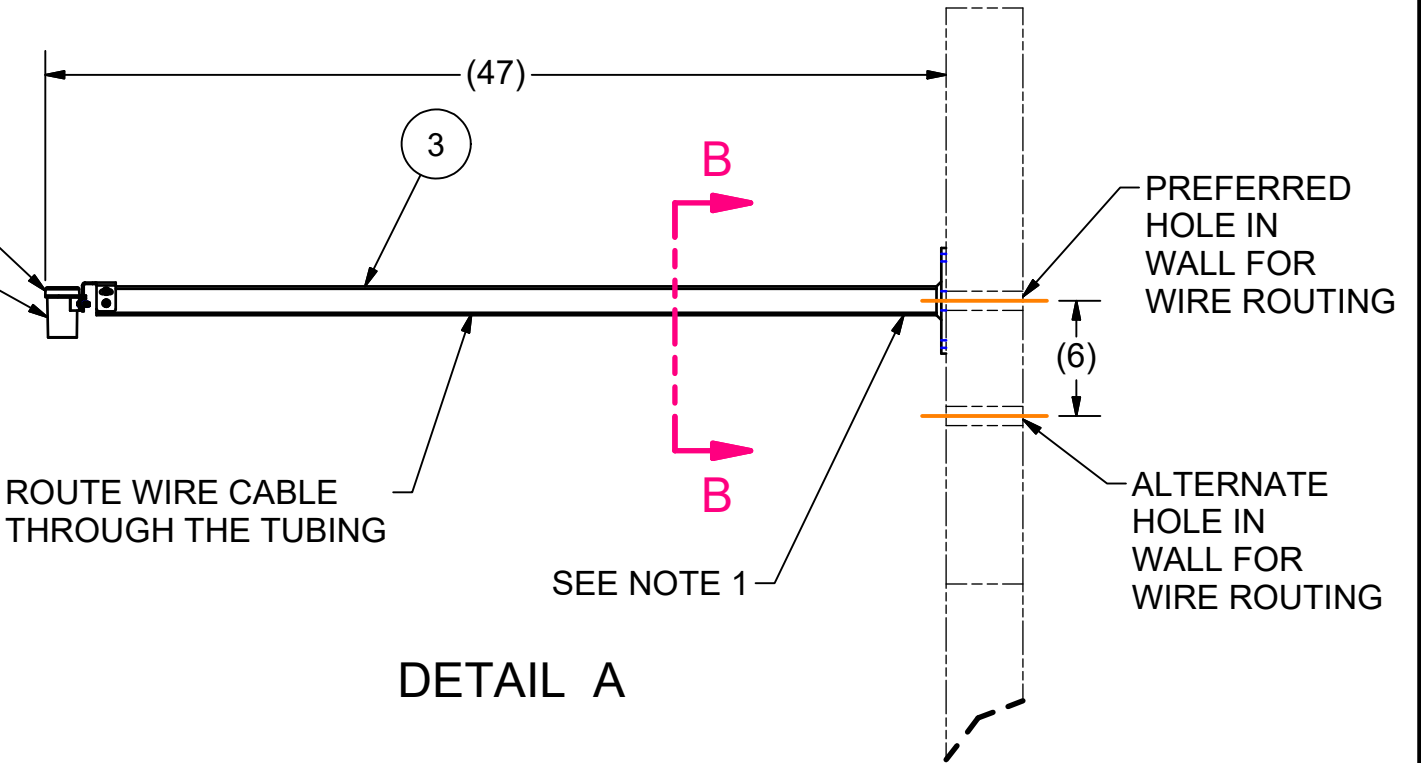
SECTION B-B
SEE NOTE 2

POINT SENSOR STRAIGHT DOWN
WHEN INSTALLED ON BUILDING



BILL OF MATERIAL				
ITEM	QTY	PART NO.	DESCRIPTION	SIZE
1	1	0961-0652	SENSOR,VEH DET	12VDC,10M LEAD 30 V,W/BRKT
2	1	1026-0005	INSTALLATION INSTRUCTIONS	IDOCK SENSOR KITS
3	1	3051-0318	VEHICLE DETECTION BRACKET ASSY	


* NOT SHOWN



DETAIL A

CONTROL PANEL

ALL DIMENSIONS ARE IN INCHES UNLESS OTHERWISE NOTED

A	19-112	11/22/19	REVISED & REDRAWN, ADD ELECTRICAL NOTES
-	18-051	10/17/18	RELEASED
			
KIT,VEHICLE DETECTION ASSY			
MATERIAL			STOCK NO.
DRAWN BY BDK		CHECKED BY	DATE 6/18/2018
TOLERANCES (UNLESS OTHERWISE NOTED)		DRAWING NO.	
FRACTIONAL: ± 1/32"		7155-0007	
DECIMAL: .00 = ± .01"			
.000 = ± .005"			
ANGULAR: ± 1°			
This print is the property of Systems, Inc. and represents a proprietary article in which Systems, Inc. retains any and all patent and other rights, including exclusive rights of use and/or manufacture and/or sale. Possession of this print does not convey any permission to reproduce, print or manufacture the article or articles shown therein, such permission to be granted only by written authorization signed by an officer or other authorized agent of Systems, Inc. thereof.			

iDock Sensor Retrofit Kit • Installation Overview



Always read and understand the Owner's/User's Manual and become thoroughly familiar with the equipment and its controls before installing or operating equipment. **Failure to read and understand owner's/user's manual may result in voiding of warranty, damage to equipment, death or serious injury!**

iDock controllers with a 7141-0360 Expansion Board installed can retrofit sensors with a program update (via main board exchange or SD card update as required) and the following kit(s):

Fluid Sensor Retrofit Kits

Fluid Sensor Kit Options	
Part Number	Description
7155-0001	Kit, Fluid Sensor, Plastic Reservoir
7155-0002*	Kit, Fluid Sensor, Cookpot Reservoir*

Note: Kits require the installer to provide field wiring (3-wire, 18-gauge minimum) between the fluid sensor and iDock controller to complete installation. Follow all local and applicable national electrical codes.

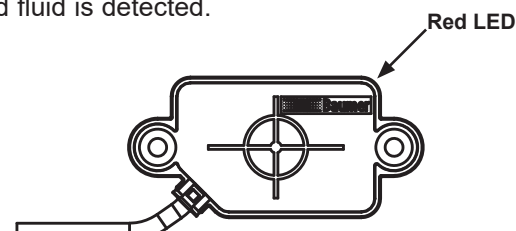
***Kit 7155-0002 additionally requires the installer to provide thread sealant tape and hydraulic fluid meeting or exceeding specification MIL-H-5606 to complete installation.**

Installation Overview

1. Ensure work area is barricaded and proper Lock Out/Tag Out procedures are performed during service.
2. Locate the hydraulic fluid reservoir of the motor/pump assembly where the sensor will be installed.
3. Install fluid level sensor to reservoir.
 - Units with plastic reservoirs have an externally mounted sensor that requires no disassembly to install. Refer to print 7155-0001.
 - Units with cookpot reservoirs require disassembly to install the provided pre-drilled reservoir and sensor. Refer to print 7155-0002. Use thread sealant tape where sensor enters reservoir. When assembly is complete, refill reservoir with appropriate amount of hydraulic fluid.
4. Connect fluid sensor wiring to electrical junction box in dock leveler pit or on wall near CentraPower unit.
5. Connect field wires to appropriate terminals in iDock control box. Refer to job-specific iDock wiring diagram for information as specific wiring may vary.
6. Restore power to equipment and verify operation of sensors:
 - Kit 7155-0001 sensor will illuminate a red light when powered and fluid is detected.
 - Kit 7155-0002 sensor will illuminate a blue light when powered and fluid is detected.



7155-0002 sensor



7155-0001 sensor

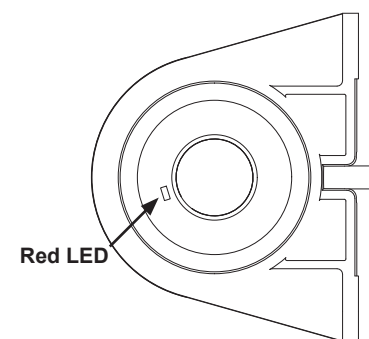
Other Sensor Retrofit Kits

Other Sensor Retrofit Kit Options	
Part Number	Description
7155-0007*	Kit, Vehicle Detection Assembly*
7155-0008*	Kit, Forklift Sensor Assembly
7155-0009	Kit, Leveler Stored Retrofit
7155-0010*	Kit, Door Open Sensor*
7155-0011*	Kit, Door Closed Sensor*

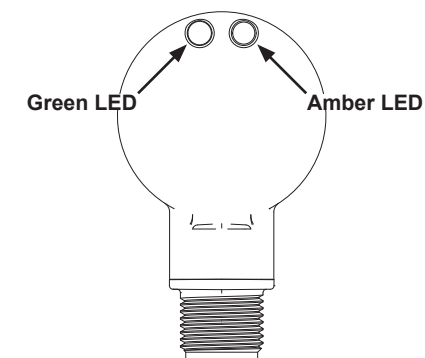
***Vehicle Detection Assembly, Forklift and Door Sensor kits require the installer to provide mounting hardware.**

Installation Overview

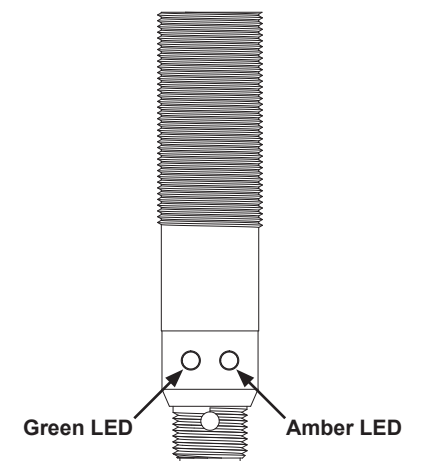
1. Ensure work area is barricaded and proper Lock Out/Tag Out procedures are performed during service.
2. Install sensors at specified location(s). Avoid mounting sensor eyes in direct sunlight for proper performance; some installations may require additional shielding (provided by others).
 - Kits require the installer to drill and install mounting hardware provided by others. Refer to corresponding print for any given kit number.
 - Forklift Sensor Kits can be mounted directly to pre-drilled holes in separately purchased Allied Solutions Track Guard LS. Refer to Track Guard LS Owner's/User's Manual for instructions.
3. Connect sensor wires to appropriate terminals in iDock control box. Refer to iDock wiring diagram supplied with control panel for information.
4. Restore power to equipment and verify operation of sensors:
 - Kit 7155-0007 sensor will illuminate a dim red light when powered and a bright red light when an object is detected. To adjust sensor detection range, follow instructions on print 7155-0007.
 - All other kit sensors will illuminate a green light when powered and an amber light when the sensor is detecting its own reflection. If amber light is flashing, adjust sensor as needed until light is steady on.



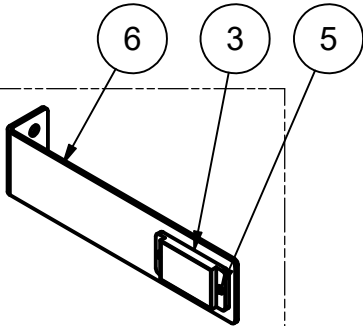
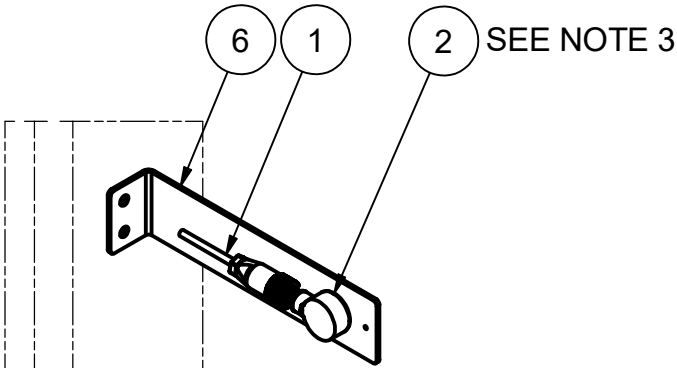
7155-0007 sensor



7155-0008 and 7155-0011 sensors



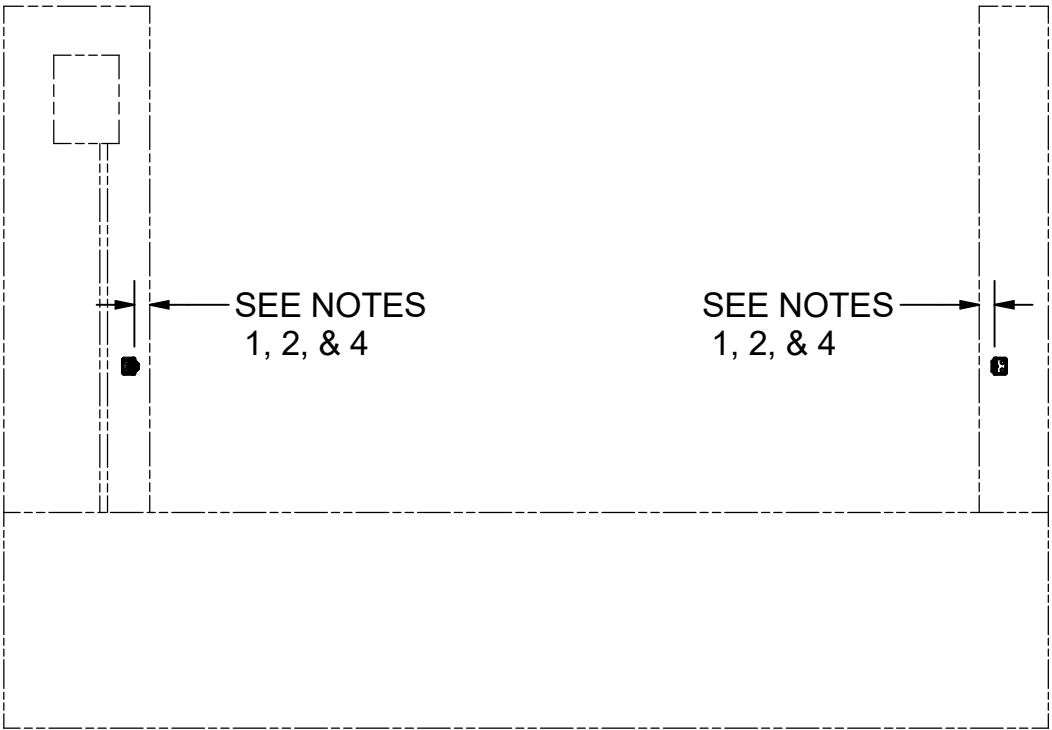
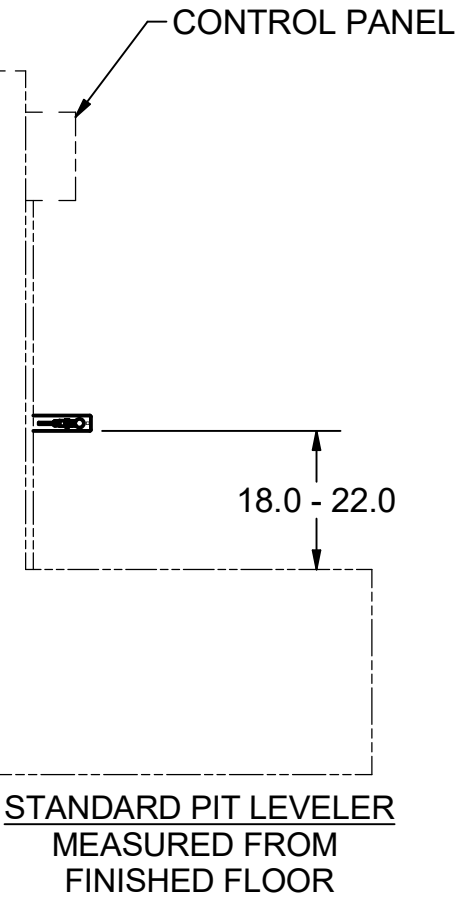
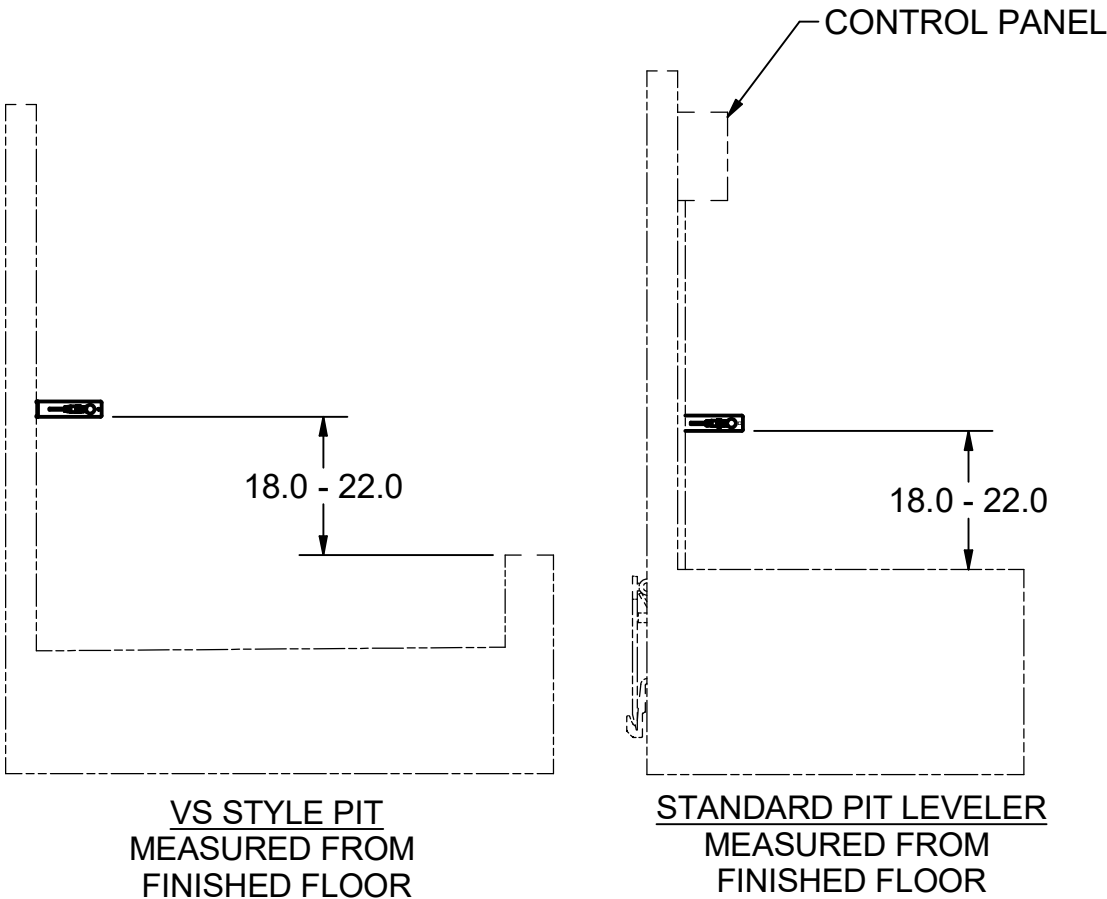
7155-0009 and 7155-0010 sensors



*


* - NOT SHOWN

- NOTES:
1. HARDWARE TO MOUNT SENSOR BRACKETS TO WALL IS SUPPLIED BY OTHERS.
 2. ENSURE PROPER CLEARANCE TO OVERHEAD DOOR & TRACK.
MAY NEED TO POSITION AWAY FROM DOOR OPENING TO AVOID DIRECT SUNLIGHT OR PREVENT DAMAGE TO BRACKET OR SENSOR.
 3. SENSOR MUST BE LOCATED ON SAME SIDE OF DOOR OPENING AS CONTROL PANEL TO ENSURE SUFFICIENT CABLE LENGTH IS PROVIDED.
 4. FINAL ADJUSTMENT MAY BE NEEDED FOR PROPER ALIGNMENT BETWEEN SENSOR AND REFLECTOR. INDICATION OF REFLECTOR IS IDENTIFIED WITH GREEN LIGHT ON SENSOR.
 5. ELECTRICAL CONNECTIONS TO THE CONTROLLER:
 - BRN - TERMINAL STRIP 20
 - BLU - TERMINAL STRIP 21
 - WHT - NOT CONNECTED
 - BLK - EXPANSION BOARD DC INPUT 3 - TERMINAL 26 (WIRE #36)



WIRE # & COLOR	PHOTOSENSOR	REFLECTOR OR REFLECTIVE TAPE
20 - BRN	12 VDC	
21 - BLU	0 VDC	
N.C. - WHT	NC SIGNAL	
36 - BLK	NO SIGNAL	

-19-11210/16/2019INITIAL RELEASE



POWERAMP
MCGUIRES
DLM

KIT,FORKLIFT SENSOR ASSY
12VDC,RETROREFLECTIVE,BRKT MNT

MATERIALSTOCK NO.

DRAWN BYJCS

CHECKED BY

DATE10/16/2019

TOLERANCES
(UNLESS OTHERWISE NOTED)

FRACTIONAL: ± 1/32"

DECIMAL:
.00 = ± .01"
.000 = ± .005"

ANGULAR: ± 1°

DRAWING NO.

7155-0008

ALL DIMENSIONS ARE IN INCHES
UNLESS OTHERWISE NOTED

This print is the property of Systems, LLC and represents a proprietary article in which Systems, LLC retains any and all patent and other rights, including exclusive rights of use and/or manufacture and/or sale. Possession of this print does not convey any permission to reproduce, print or manufacture the article or articles shown therein, such permission to be granted only by written authorization signed by an officer or other authorized agent of Systems, LLC thereof.

REV A - ECN 18-066

iDock Sensor Retrofit Kit • Installation Overview



Always read and understand the Owner's/User's Manual and become thoroughly familiar with the equipment and its controls before installing or operating equipment. **Failure to read and understand owner's/user's manual may result in voiding of warranty, damage to equipment, death or serious injury!**

iDock controllers with a 7141-0360 Expansion Board installed can retrofit sensors with a program update (via main board exchange or SD card update as required) and the following kit(s):

Fluid Sensor Retrofit Kits

Fluid Sensor Kit Options	
Part Number	Description
7155-0001	Kit, Fluid Sensor, Plastic Reservoir
7155-0002*	Kit, Fluid Sensor, Cookpot Reservoir*

Note: Kits require the installer to provide field wiring (3-wire, 18-gauge minimum) between the fluid sensor and iDock controller to complete installation. Follow all local and applicable national electrical codes.

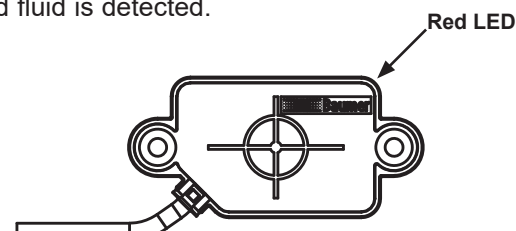
***Kit 7155-0002 additionally requires the installer to provide thread sealant tape and hydraulic fluid meeting or exceeding specification MIL-H-5606 to complete installation.**

Installation Overview

1. Ensure work area is barricaded and proper Lock Out/Tag Out procedures are performed during service.
2. Locate the hydraulic fluid reservoir of the motor/pump assembly where the sensor will be installed.
3. Install fluid level sensor to reservoir.
 - Units with plastic reservoirs have an externally mounted sensor that requires no disassembly to install. Refer to print 7155-0001.
 - Units with cookpot reservoirs require disassembly to install the provided pre-drilled reservoir and sensor. Refer to print 7155-0002. Use thread sealant tape where sensor enters reservoir. When assembly is complete, refill reservoir with appropriate amount of hydraulic fluid.
4. Connect fluid sensor wiring to electrical junction box in dock leveler pit or on wall near CentraPower unit.
5. Connect field wires to appropriate terminals in iDock control box. Refer to job-specific iDock wiring diagram for information as specific wiring may vary.
6. Restore power to equipment and verify operation of sensors:
 - Kit 7155-0001 sensor will illuminate a red light when powered and fluid is detected.
 - Kit 7155-0002 sensor will illuminate a blue light when powered and fluid is detected.



7155-0002 sensor



7155-0001 sensor

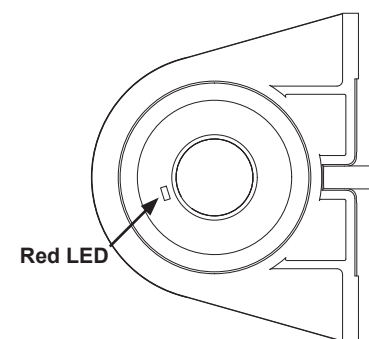
Other Sensor Retrofit Kits

Other Sensor Retrofit Kit Options	
Part Number	Description
7155-0007*	Kit, Vehicle Detection Assembly*
7155-0008*	Kit, Forklift Sensor Assembly
7155-0009	Kit, Leveler Stored Retrofit
7155-0010*	Kit, Door Open Sensor*
7155-0011*	Kit, Door Closed Sensor*

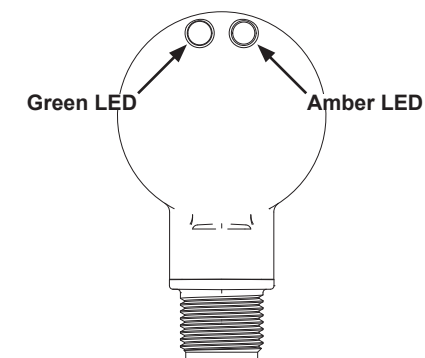
***Vehicle Detection Assembly, Forklift and Door Sensor kits require the installer to provide mounting hardware.**

Installation Overview

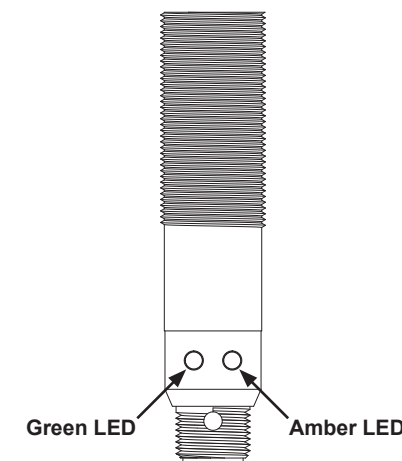
1. Ensure work area is barricaded and proper Lock Out/Tag Out procedures are performed during service.
2. Install sensors at specified location(s). Avoid mounting sensor eyes in direct sunlight for proper performance; some installations may require additional shielding (provided by others).
 - Kits require the installer to drill and install mounting hardware provided by others. Refer to corresponding print for any given kit number.
 - Forklift Sensor Kits can be mounted directly to pre-drilled holes in separately purchased Allied Solutions Track Guard LS. Refer to Track Guard LS Owner's/User's Manual for instructions.
3. Connect sensor wires to appropriate terminals in iDock control box. Refer to iDock wiring diagram supplied with control panel for information.
4. Restore power to equipment and verify operation of sensors:
 - Kit 7155-0007 sensor will illuminate a dim red light when powered and a bright red light when an object is detected. To adjust sensor detection range, follow instructions on print 7155-0007.
 - All other kit sensors will illuminate a green light when powered and an amber light when the sensor is detecting its own reflection. If amber light is flashing, adjust sensor as needed until light is steady on.



7155-0007 sensor



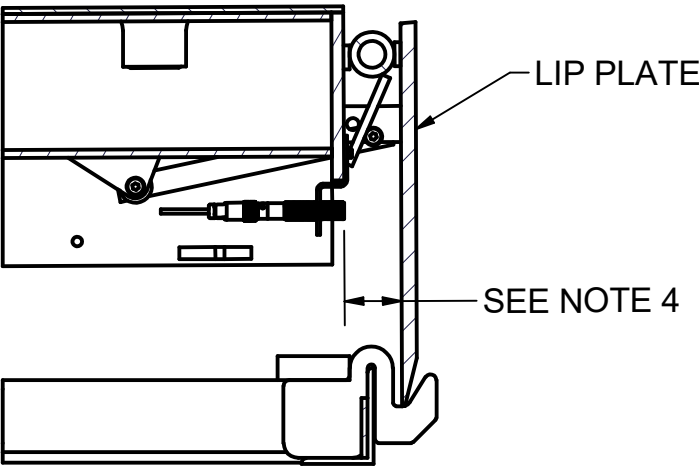
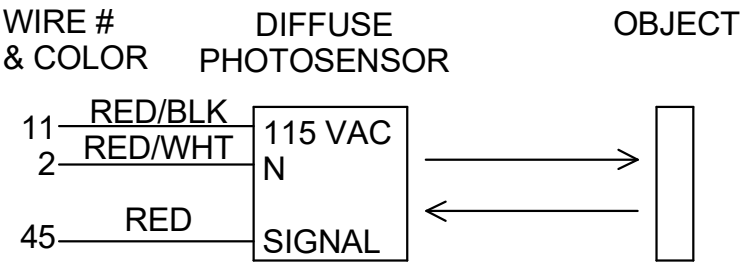
7155-0008 and 7155-0011 sensors



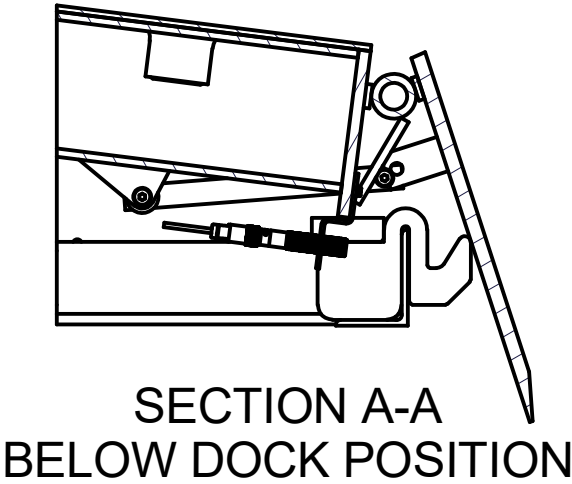
7155-0009 and 7155-0010 sensors

ELECTRICAL NOTES AND SCHEMATIC:

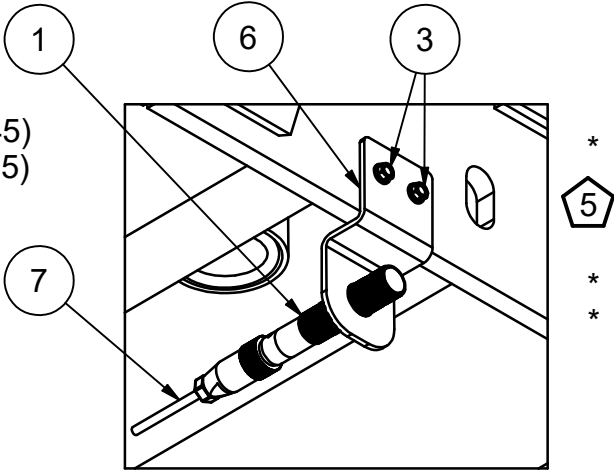
RED/BLK - TERMINAL STRIP 11
RED/WHT - TERMINAL STRIP 2
RED - SM. TERM. BRD HV INPUT 1 - TERM. 15 (WIRE #45)
- LG. TERM. BRD HV INPUT 1 - TERM. 23 (WIRE #45)



SECTION A-A
STORED POSITION

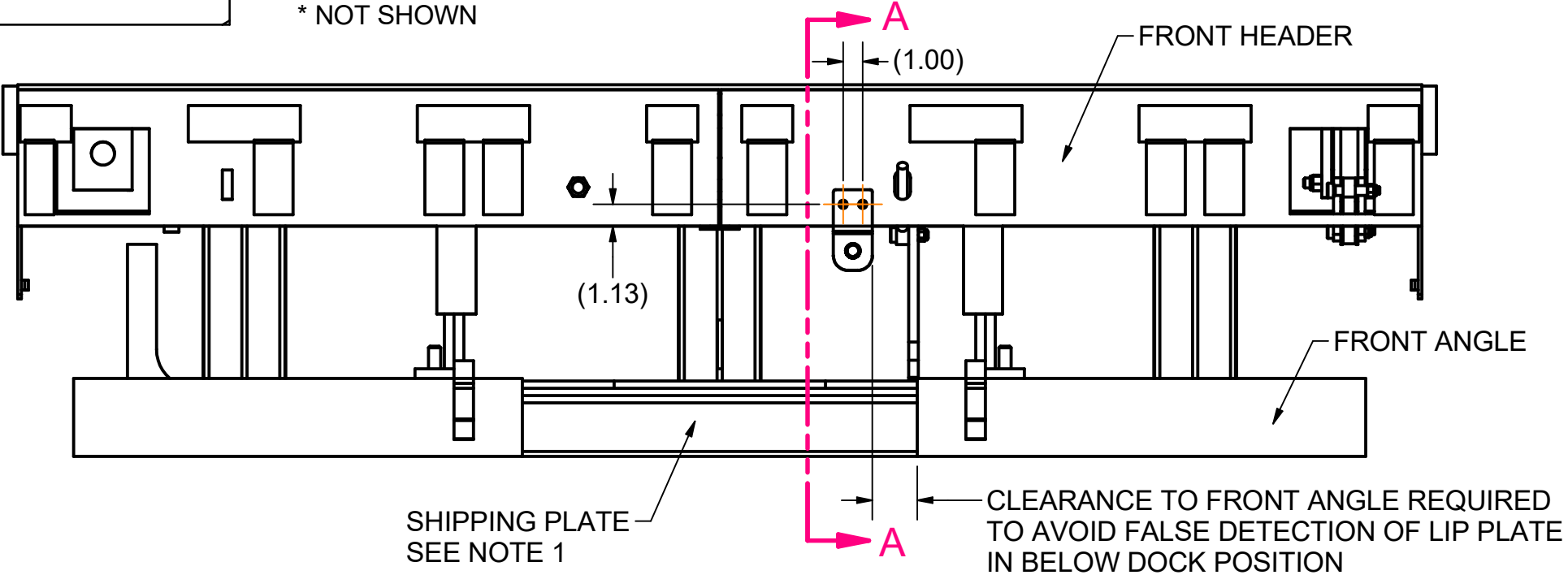


SECTION A-A
BELOW DOCK POSITION



BILL OF MATERIAL					
ITEM	QTY	PART NO.	DESCRIPTION	SIZE	
1	1	0961-0662	PHOTOSENSOR,DIFFUSE,LT OP,1/2"	PNP,100 MM RANGE,20-250 VAC	
2	1	1026-0005	INSTALLATION INSTRUCTIONS	IDOCK SENSOR KITS	
3	4	2101-0105	SCREW,HWHMS,HEX WASHER HEAD,SELF-TAP	#12-24 UNC X 1.25,TEK#5	
4	3	3051-0001	CABLE TIE	0.1X4,0.75	
5	3	3051-0031	MTG BASE,CABLE TIE	4 WAY,ADHESIVE	
6	1	3051-0328	MTG BRKT, LS RETRO FIT,FORMED		
7	1	4301-0025	CABLE,10M,1/2" CONNECTOR	FLYING LEADS, 22/4 AWG	

* NOT SHOWN



NOTES:

1. SHIPPING PLATE ON THE FRAME MUST BE REMOVED TO AVOID FALSE DETECTION OF LIP PLATE IN BELOW DOCK POSITION.
2. LOCATE BRACKET ON FRONT HEADER SIMILAR TO AS SHOWN. SIDE TO SIDE LOCATION TO BE DETERMINED AT TIME OF INSTALL. ENSURE PROPER CLEARANCE TO LEVELER FRAME OR OTHER OBSTRUCTIONS WHEN IN BELOW DOCK POSITION.
3. CLAMP BRACKET TO FRONT TO USE AS TEMPLATE TO DRILL Ø.125 PILOT HOLES FOR MOUNTING HARDWARE. AVOID DRILLING INTO BEAMS ON BACK SIDE OF FRONT HEADER. REMOVE CLAMP AND SECURE BRACKET TO FRONT HEADER.
4. ADJUST SENSOR TO DETECT LIP PLATE IN STORED POSITION AND NOT ABLE TO DETECT LIP PLATE OR ANY OTHER OBJECT IN BELOW DOCK POSITION.
5. EXTRA SCREWS PROVIDED TO ENSURE BRACKET IS PROPERLY MOUNTED TO FRONT HEADER.

ALL DIMENSIONS ARE IN INCHES
UNLESS OTHERWISE NOTED

-	19-112	10/27/2019	INITIAL RELEASE
KIT,LS RETROFIT,115 VAC, W/ BRACKET AND CABLE			
MATERIAL		STOCK NO.	
DRAWN BY JCS		CHECKED BY	
		DATE 10/14/2019	
TOLERANCES (UNLESS OTHERWISE NOTED)		DRAWING NO.	
FRACTIONAL: ± 1/32"		7155-0009	
DECIMAL: .00 = ± .01"			
.000 = ± .005"			
ANGULAR: ± 1°			
<small>This print is the property of Systems, Inc. and represents a proprietary article in which Systems, Inc. retains any and all patent and other rights, including exclusive rights of use and/or manufacture and/or sale. Possession of this print does not convey any permission to reproduce, print or manufacture the article or articles shown therein, such permission to be granted only by written authorization signed by an officer or other authorized agent of Systems, Inc. thereof.</small>			

iDock Sensor Retrofit Kit • Installation Overview



Always read and understand the Owner's/User's Manual and become thoroughly familiar with the equipment and its controls before installing or operating equipment. **Failure to read and understand owner's/user's manual may result in voiding of warranty, damage to equipment, death or serious injury!**

iDock controllers with a 7141-0360 Expansion Board installed can retrofit sensors with a program update (via main board exchange or SD card update as required) and the following kit(s):

Fluid Sensor Retrofit Kits

Fluid Sensor Kit Options	
Part Number	Description
7155-0001	Kit, Fluid Sensor, Plastic Reservoir
7155-0002*	Kit, Fluid Sensor, Cookpot Reservoir*

Note: Kits require the installer to provide field wiring (3-wire, 18-gauge minimum) between the fluid sensor and iDock controller to complete installation. Follow all local and applicable national electrical codes.

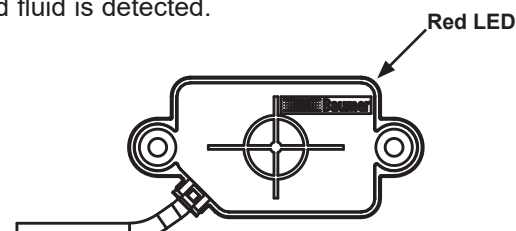
***Kit 7155-0002 additionally requires the installer to provide thread sealant tape and hydraulic fluid meeting or exceeding specification MIL-H-5606 to complete installation.**

Installation Overview

1. Ensure work area is barricaded and proper Lock Out/Tag Out procedures are performed during service.
2. Locate the hydraulic fluid reservoir of the motor/pump assembly where the sensor will be installed.
3. Install fluid level sensor to reservoir.
 - Units with plastic reservoirs have an externally mounted sensor that requires no disassembly to install. Refer to print 7155-0001.
 - Units with cookpot reservoirs require disassembly to install the provided pre-drilled reservoir and sensor. Refer to print 7155-0002. Use thread sealant tape where sensor enters reservoir. When assembly is complete, refill reservoir with appropriate amount of hydraulic fluid.
4. Connect fluid sensor wiring to electrical junction box in dock leveler pit or on wall near CentraPower unit.
5. Connect field wires to appropriate terminals in iDock control box. Refer to job-specific iDock wiring diagram for information as specific wiring may vary.
6. Restore power to equipment and verify operation of sensors:
 - Kit 7155-0001 sensor will illuminate a red light when powered and fluid is detected.
 - Kit 7155-0002 sensor will illuminate a blue light when powered and fluid is detected.



7155-0002 sensor



7155-0001 sensor

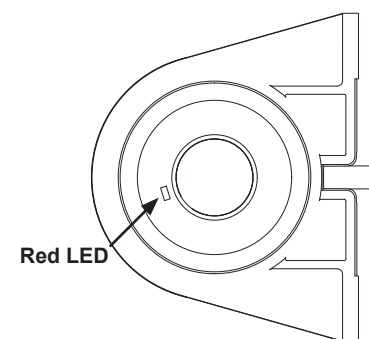
Other Sensor Retrofit Kits

Other Sensor Retrofit Kit Options	
Part Number	Description
7155-0007*	Kit, Vehicle Detection Assembly*
7155-0008*	Kit, Forklift Sensor Assembly
7155-0009	Kit, Leveler Stored Retrofit
7155-0010*	Kit, Door Open Sensor*
7155-0011*	Kit, Door Closed Sensor*

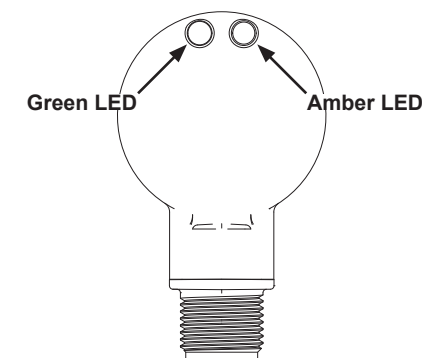
***Vehicle Detection Assembly, Forklift and Door Sensor kits require the installer to provide mounting hardware.**

Installation Overview

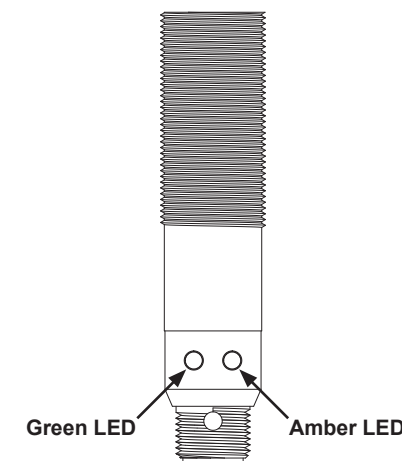
1. Ensure work area is barricaded and proper Lock Out/Tag Out procedures are performed during service.
2. Install sensors at specified location(s). Avoid mounting sensor eyes in direct sunlight for proper performance; some installations may require additional shielding (provided by others).
 - Kits require the installer to drill and install mounting hardware provided by others. Refer to corresponding print for any given kit number.
 - Forklift Sensor Kits can be mounted directly to pre-drilled holes in separately purchased Allied Solutions Track Guard LS. Refer to Track Guard LS Owner's/User's Manual for instructions.
3. Connect sensor wires to appropriate terminals in iDock control box. Refer to iDock wiring diagram supplied with control panel for information.
4. Restore power to equipment and verify operation of sensors:
 - Kit 7155-0007 sensor will illuminate a dim red light when powered and a bright red light when an object is detected. To adjust sensor detection range, follow instructions on print 7155-0007.
 - All other kit sensors will illuminate a green light when powered and an amber light when the sensor is detecting its own reflection. If amber light is flashing, adjust sensor as needed until light is steady on.



7155-0007 sensor

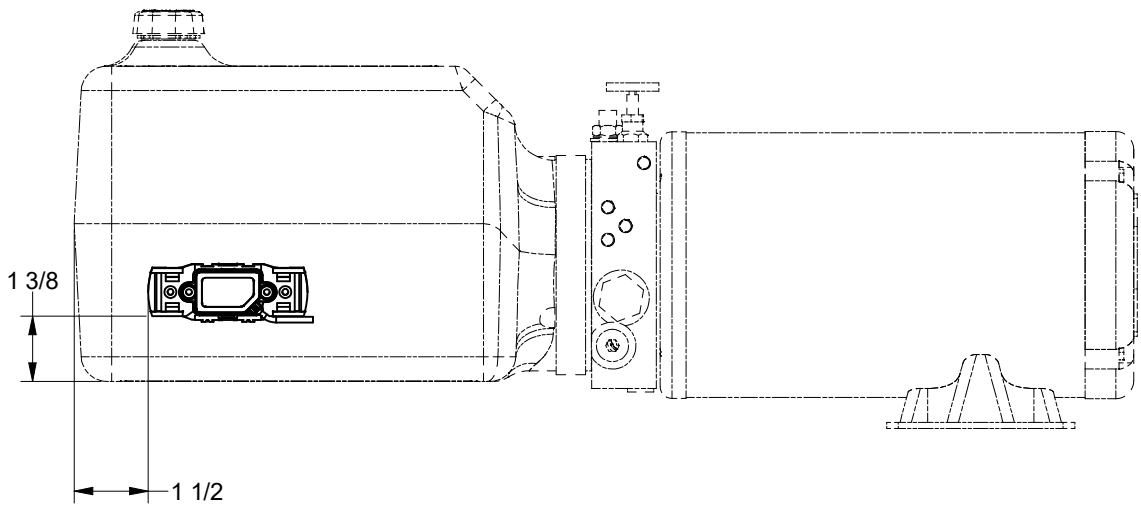


7155-0008 and 7155-0011 sensors

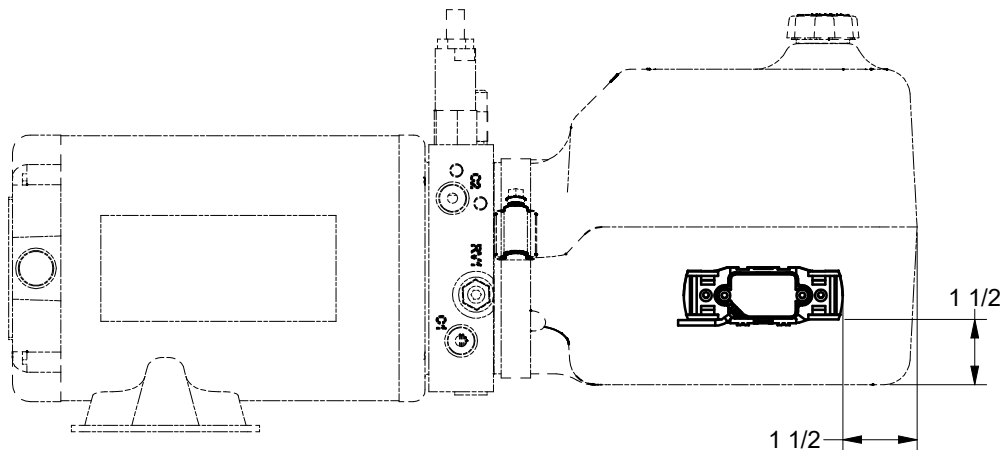


7155-0009 and 7155-0010 sensors

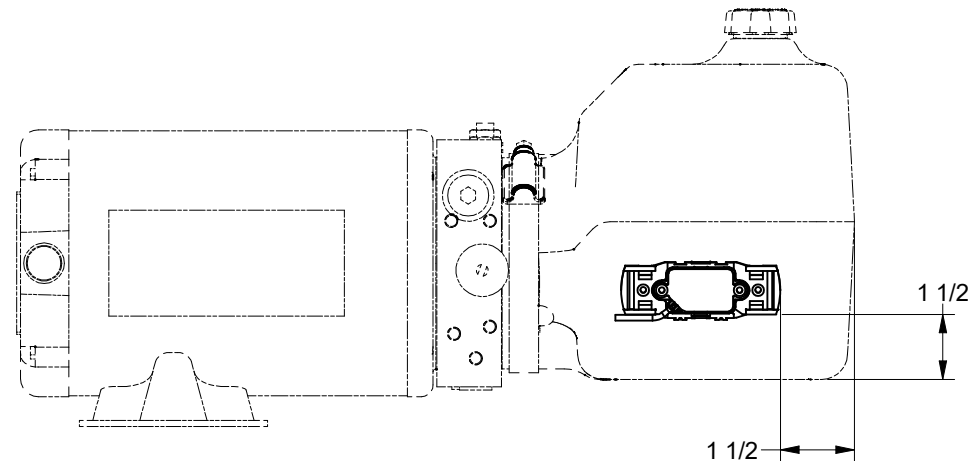
EH3/DH3 LOCATION
SEE NOTES FOR INSTRUCTIONS



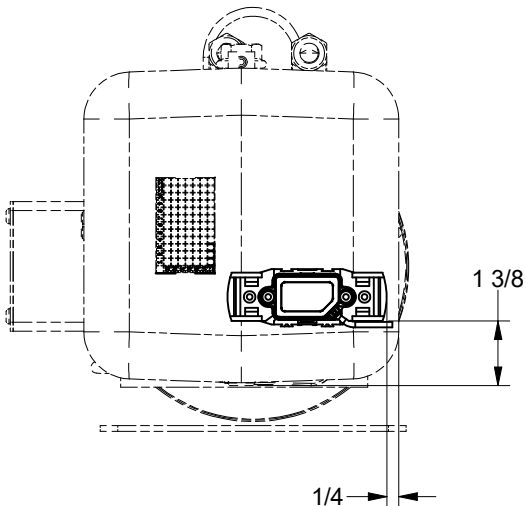
LH LOCATION
SEE NOTES FOR INSTRUCTIONS



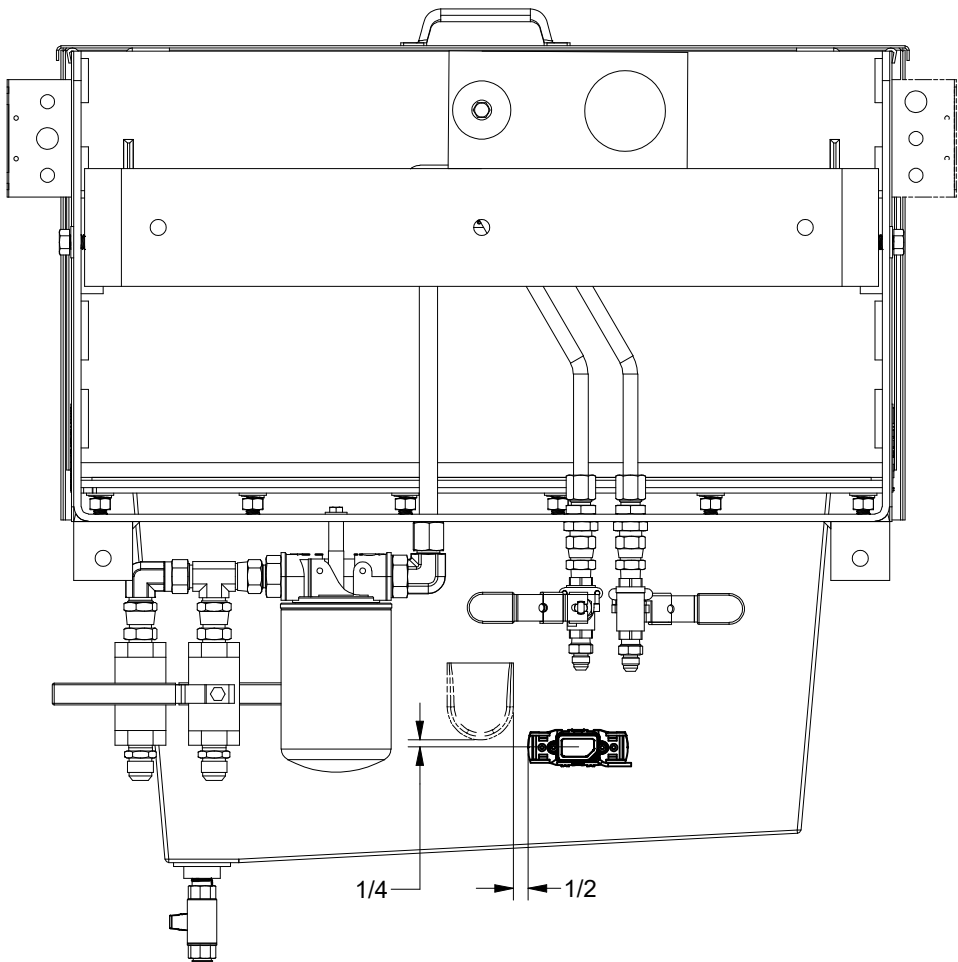
H/HP LOCATION
SEE NOTES FOR INSTRUCTIONS



PR3/VH3 LOCATION
SEE NOTES FOR INSTRUCTIONS

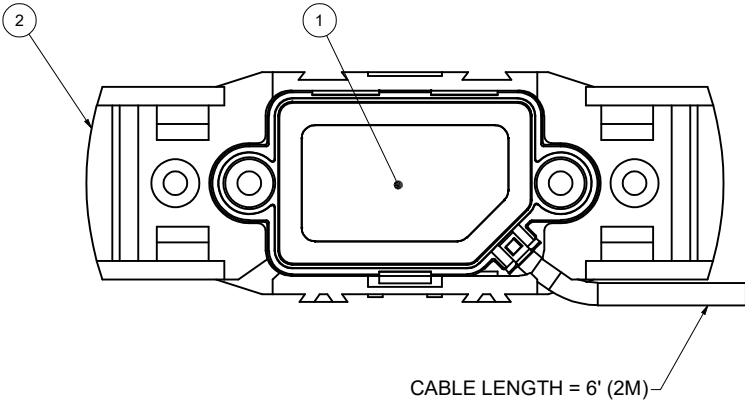


CENTRAPOWER-18 LOCATION
SEE NOTES FOR INSTRUCTIONS



BILL OF MATERIAL				
ITEM	QTY	PART NO.	DESCRIPTION	SIZE
1	1	0961-0641	SENSOR,FLUID,PLASTIC TANK	12VDC, NON-INTRUSIVE
2	1	0961-0647	BRACKET,SENSOR,PLASTIC TANK	FOR 0961-0641
3	1	1026-0005	INSTALLATION INSTRUCTIONS	IDOCK SENSOR KITS
4	2	3051-0001	CABLE TIE	0.1x4,0.75
5	2	3051-0031	MTG BASE,CABLE TIE	4 WAY,ADHESIVE


* NOT SHOWN



- NOTES:**
1. PROPERLY CLEAN PLASTIC SURFACE BEFORE ADHERING SENSOR BRACKET TO THE RESERVOIR. SEE INSTRUCTIONS INCLUDED WITH SENSOR BRACKET.
 2. MAKE SURE SENSOR BRACKET IS ORIENTATED CORRECTLY TO ALLOW SENSOR WIRES TO BE ROUTED PROPERLY TO THE J-BOX.
 3. FOR DH, EH, H, HP, LH MODELS - THE SENSOR BRACKET MAY BE PLACE ON EITHER SIDE OF THE RESERVOIR AT THE DIMENSIONS SHOWN IN THE VIEWS TO ACCOUNT FOR PROPER WIRE ROUTING TO THE J-BOX.
 4. SENSOR MUST BE ORIENTATED WITH THE CROSS HAIRS FACING THE RESERVOIR AND THE RED LIGHT (WHEN POWERED) FACING AWAY FROM THE RESERVOIR.
 5. FOR DOCK LEVELERS: J-BOX TO BE LOCATED IN THE DOCK LEVELER PIT. J-BOX SUPPLIED BY OTHERS UNLESS FACTORY INSTALLED.
 6. FOR CENTRAPOWER: ROUTE WIRES TO THE CENTRAPOWER CONTROL BOX LOCATED NEAR THE UNIT.
 7. CONNECTION FROM J-BOX TO CONTROL BOX: 3-WIRE, 18 GA MINIMUM. SUPPLIED BY OTHERS.
 8. ALL DIMENSIONS ARE IN INCHES UNLESS OTHERWISE SPECIFIED.

ELECTRICAL NOTES AND SCHEMATIC:
FLUID LEVEL SENSOR CONNECTED TO CONTROLLER AS FOLLOWS:
BRN - TERMINAL STRIP 20
BLU - TERMINAL STRIP 21
BLK - EXPANSION BOARD DC INPUT 1 (TERMINAL 24)

WIRE # & COLOR	FLUID LEVEL SENSOR
20 BRN	12 VDC
21 BLU	0 VDC
34 BLK	NC SIGNAL

A	19-112	10/16/19	ADD ELECTRICAL NOTES & SCHEMATIC
-	18-051	10/17/18	RELEASED
			POWERAMP MCGUIRE DLM
S Y S T E M S			
Loading Dock Equipment			
KIT,FLUID SENSOR ASSY			
12VDC,PLASTIC RESERVOIR			
MATERIAL			STOCK NO.
DRAWN BY BDK		CHECKED BY	DATE 6/1/2018
TOLERANCES (UNLESS OTHERWISE NOTED)		DRAWING NO.	
FRACTIONAL: ± 1/32"		7155-0001	
DECIMAL: .00 = ± .01"			
.000 = ± .005"			
ANGULAR: ± 1°			

iDock Sensor Retrofit Kit • Installation Overview



Always read and understand the Owner's/User's Manual and become thoroughly familiar with the equipment and its controls before installing or operating equipment. **Failure to read and understand owner's/user's manual may result in voiding of warranty, damage to equipment, death or serious injury!**

iDock controllers with a 7141-0360 Expansion Board installed can retrofit sensors with a program update (via main board exchange or SD card update as required) and the following kit(s):

Fluid Sensor Retrofit Kits

Fluid Sensor Kit Options	
Part Number	Description
7155-0001	Kit, Fluid Sensor, Plastic Reservoir
7155-0002*	Kit, Fluid Sensor, Cookpot Reservoir*

Note: Kits require the installer to provide field wiring (3-wire, 18-gauge minimum) between the fluid sensor and iDock controller to complete installation. Follow all local and applicable national electrical codes.

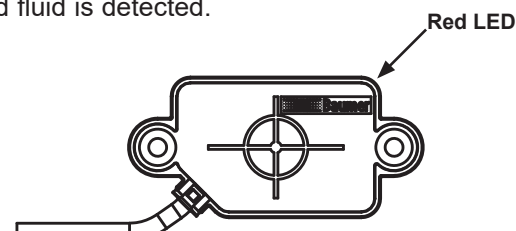
***Kit 7155-0002 additionally requires the installer to provide thread sealant tape and hydraulic fluid meeting or exceeding specification MIL-H-5606 to complete installation.**

Installation Overview

1. Ensure work area is barricaded and proper Lock Out/Tag Out procedures are performed during service.
2. Locate the hydraulic fluid reservoir of the motor/pump assembly where the sensor will be installed.
3. Install fluid level sensor to reservoir.
 - Units with plastic reservoirs have an externally mounted sensor that requires no disassembly to install. Refer to print 7155-0001.
 - Units with cookpot reservoirs require disassembly to install the provided pre-drilled reservoir and sensor. Refer to print 7155-0002. Use thread sealant tape where sensor enters reservoir. When assembly is complete, refill reservoir with appropriate amount of hydraulic fluid.
4. Connect fluid sensor wiring to electrical junction box in dock leveler pit or on wall near CentraPower unit.
5. Connect field wires to appropriate terminals in iDock control box. Refer to job-specific iDock wiring diagram for information as specific wiring may vary.
6. Restore power to equipment and verify operation of sensors:
 - Kit 7155-0001 sensor will illuminate a red light when powered and fluid is detected.
 - Kit 7155-0002 sensor will illuminate a blue light when powered and fluid is detected.



7155-0002 sensor



7155-0001 sensor

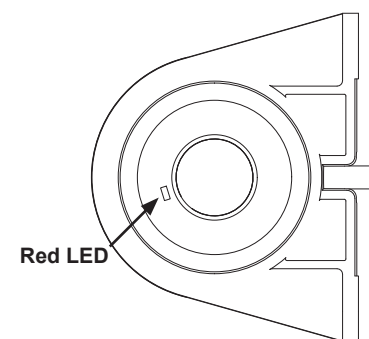
Other Sensor Retrofit Kits

Other Sensor Retrofit Kit Options	
Part Number	Description
7155-0007*	Kit, Vehicle Detection Assembly*
7155-0008*	Kit, Forklift Sensor Assembly
7155-0009	Kit, Leveler Stored Retrofit
7155-0010*	Kit, Door Open Sensor*
7155-0011*	Kit, Door Closed Sensor*

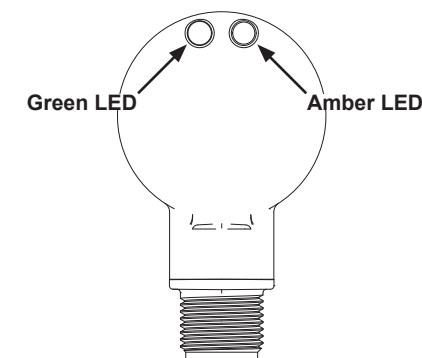
***Vehicle Detection Assembly, Forklift and Door Sensor kits require the installer to provide mounting hardware.**

Installation Overview

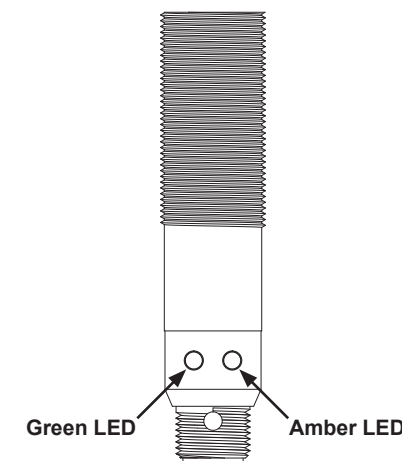
1. Ensure work area is barricaded and proper Lock Out/Tag Out procedures are performed during service.
2. Install sensors at specified location(s). Avoid mounting sensor eyes in direct sunlight for proper performance; some installations may require additional shielding (provided by others).
 - Kits require the installer to drill and install mounting hardware provided by others. Refer to corresponding print for any given kit number.
 - Forklift Sensor Kits can be mounted directly to pre-drilled holes in separately purchased Allied Solutions Track Guard LS. Refer to Track Guard LS Owner's/User's Manual for instructions.
3. Connect sensor wires to appropriate terminals in iDock control box. Refer to iDock wiring diagram supplied with control panel for information.
4. Restore power to equipment and verify operation of sensors:
 - Kit 7155-0007 sensor will illuminate a dim red light when powered and a bright red light when an object is detected. To adjust sensor detection range, follow instructions on print 7155-0007.
 - All other kit sensors will illuminate a green light when powered and an amber light when the sensor is detecting its own reflection. If amber light is flashing, adjust sensor as needed until light is steady on.



7155-0007 sensor

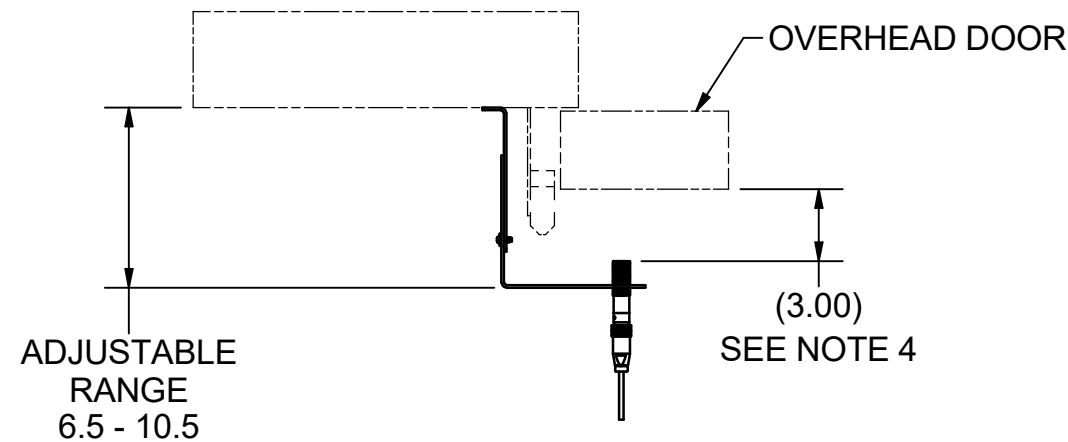
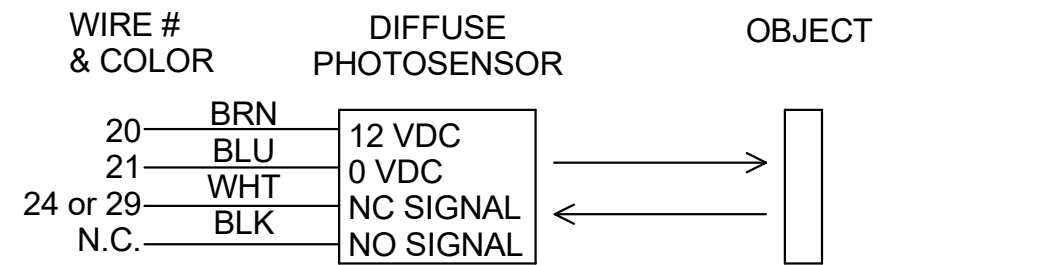


7155-0008 and 7155-0011 sensors

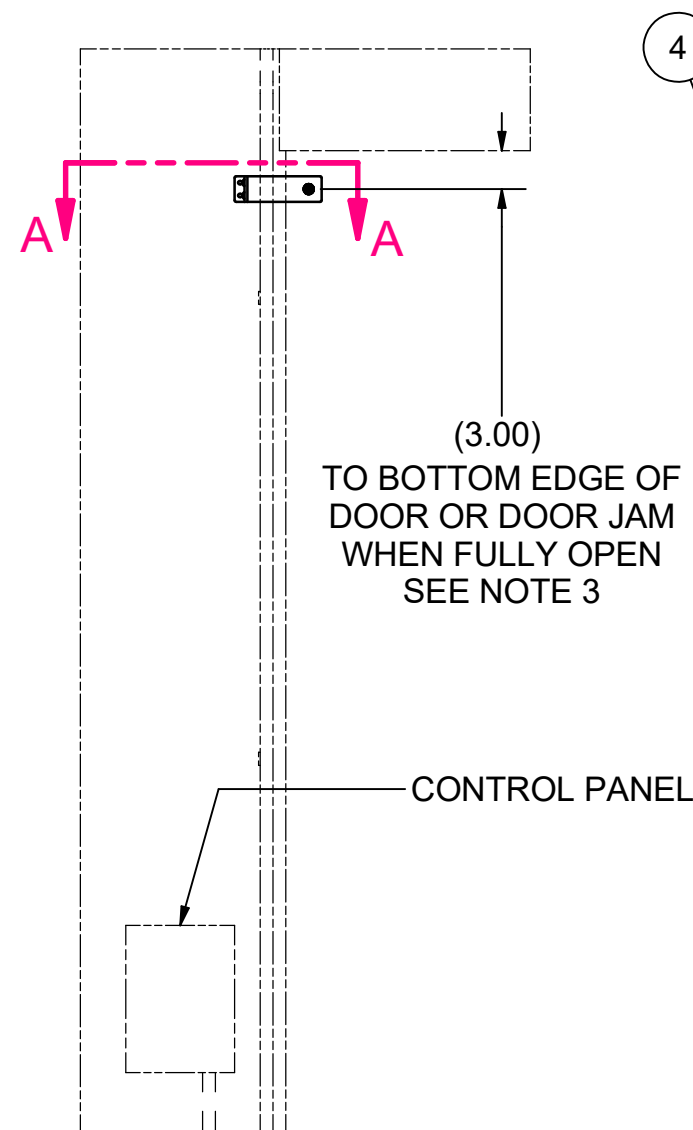
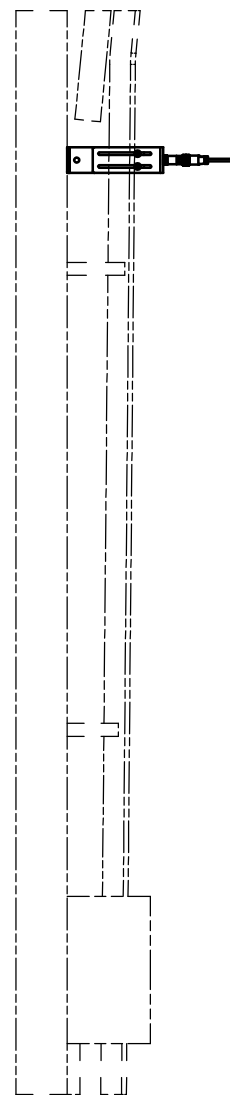


7155-0009 and 7155-0010 sensors

- NOTES:
1. HARDWARE TO MOUNT BRACKET TO WALL IS SUPPLIED BY OTHERS.
 2. LOCATE BRACKET AND SENOR ON SAME SIDE OF THE DOOR OPENING AS THE CONTROL PANEL TO ENSURE SUFFICIENT CABLE LENGTH.
 3. MAKE SURE BRACKET AND SENSOR IS LOCATED LOW ENOUGH TO NOT DETECT THE DOOR UNTIL THE DOOR IS FULLY OPEN.
 4. ADJUST BRACKET AND SENSOR TO PROVIDE 3" OF CLEARANCE FROM THE FACE OF THE SENSOR TO THE OVERHEAD DOOR PANEL OR ROLL UP DOOR.
 5. ELECTRICAL CONNECTIONS TO THE CONTROL PANEL:
 - BRN - TERMINAL STRIP 20
 - BLU - TERMINAL STRIP 21
 - WHT - SMALL TERMINAL BOARD DC INPUT 3 - TERMINAL 29 (WIRE #24)
 - LRG - LARGE TERMINAL BOARD DC INPUT 8 - TERMINAL 51 (WIRE #29)



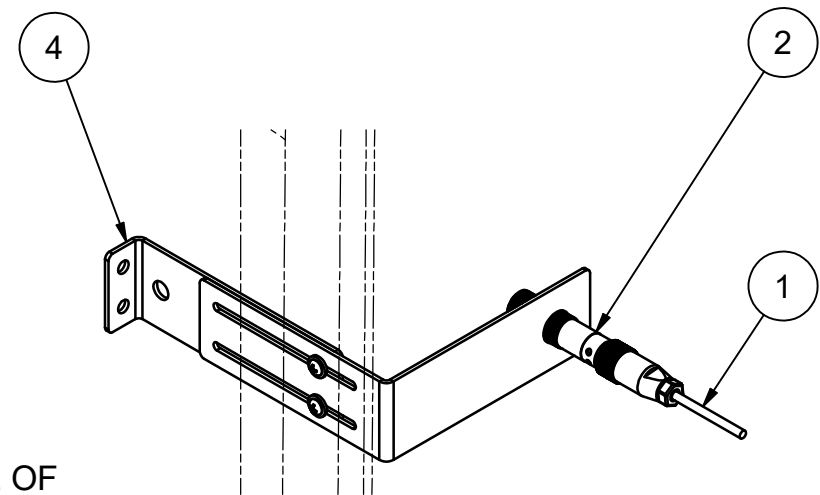
SECTION A-A




ALL DIMENSIONS ARE IN INCHES UNLESS OTHERWISE NOTED

BILL OF MATERIAL				
ITEM	QTY	PART NO.	DESCRIPTION	SIZE
1	1	0961-0648	CABLE,5M LG,M12 PLUG	FLYING LEADS, 22/4 AWG, 30 V
2	1	0961-0660	PHOTOSENSOR,DIFFUSE,LT&DK,M12	PNP, 100 MM RANGE, 10-30 VDC
3	1	1026-0005	INSTALLATION INSTRUCTIONS	IDOCK SENSOR KITS
4	1	3053-0011	DOOR SENSOR BRACKET ASSEMBLY	

* NOT SHOWN



-	19-112	10/23/2019	INITIAL RELEASE	
				
KIT,DOOR OPEN SENSOR, 12 VDC,BRKT,CABLE				
MATERIAL			STOCK NO.	
DRAWN BY JCS		CHECKED BY		DATE 10/23/2019
TOLERANCES (UNLESS OTHERWISE NOTED)		DRAWING NO. 7155-0010		
FRACTIONAL: ± 1/32"				
DECIMAL: .00 = ± .01" .000 = ± .005"				
ANGULAR: ± 1°				
<small>This print is the property of Systems, LLC and represents a proprietary article in which Systems, LLC retains any and all patent and other rights, including exclusive rights of use and/or manufacture and/or sale. Possession of this print does not convey any permission to reproduce, print or manufacture the article or articles shown therein, such permission to be granted only by written authorization signed by an officer or other authorized agent of Systems, LLC thereof.</small>				

iDock Sensor Retrofit Kit • Installation Overview



Always read and understand the Owner's/User's Manual and become thoroughly familiar with the equipment and its controls before installing or operating equipment. **Failure to read and understand owner's/user's manual may result in voiding of warranty, damage to equipment, death or serious injury!**

iDock controllers with a 7141-0360 Expansion Board installed can retrofit sensors with a program update (via main board exchange or SD card update as required) and the following kit(s):

Fluid Sensor Retrofit Kits

Fluid Sensor Kit Options	
Part Number	Description
7155-0001	Kit, Fluid Sensor, Plastic Reservoir
7155-0002*	Kit, Fluid Sensor, Cookpot Reservoir*

Note: Kits require the installer to provide field wiring (3-wire, 18-gauge minimum) between the fluid sensor and iDock controller to complete installation. Follow all local and applicable national electrical codes.

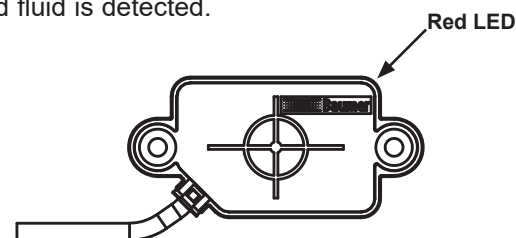
***Kit 7155-0002 additionally requires the installer to provide thread sealant tape and hydraulic fluid meeting or exceeding specification MIL-H-5606 to complete installation.**

Installation Overview

1. Ensure work area is barricaded and proper Lock Out/Tag Out procedures are performed during service.
2. Locate the hydraulic fluid reservoir of the motor/pump assembly where the sensor will be installed.
3. Install fluid level sensor to reservoir.
 - Units with plastic reservoirs have an externally mounted sensor that requires no disassembly to install. Refer to print 7155-0001.
 - Units with cookpot reservoirs require disassembly to install the provided pre-drilled reservoir and sensor. Refer to print 7155-0002. Use thread sealant tape where sensor enters reservoir. When assembly is complete, refill reservoir with appropriate amount of hydraulic fluid.
4. Connect fluid sensor wiring to electrical junction box in dock leveler pit or on wall near CentraPower unit.
5. Connect field wires to appropriate terminals in iDock control box. Refer to job-specific iDock wiring diagram for information as specific wiring may vary.
6. Restore power to equipment and verify operation of sensors:
 - Kit 7155-0001 sensor will illuminate a red light when powered and fluid is detected.
 - Kit 7155-0002 sensor will illuminate a blue light when powered and fluid is detected.



7155-0002 sensor



7155-0001 sensor

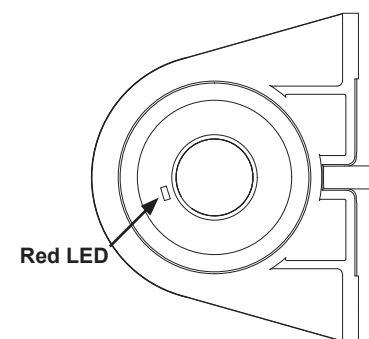
Other Sensor Retrofit Kits

Other Sensor Retrofit Kit Options	
Part Number	Description
7155-0007*	Kit, Vehicle Detection Assembly*
7155-0008*	Kit, Forklift Sensor Assembly
7155-0009	Kit, Leveler Stored Retrofit
7155-0010*	Kit, Door Open Sensor*
7155-0011*	Kit, Door Closed Sensor*

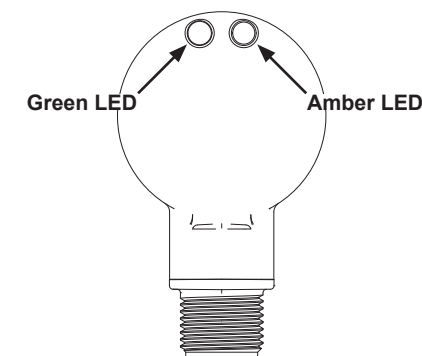
***Vehicle Detection Assembly, Forklift and Door Sensor kits require the installer to provide mounting hardware.**

Installation Overview

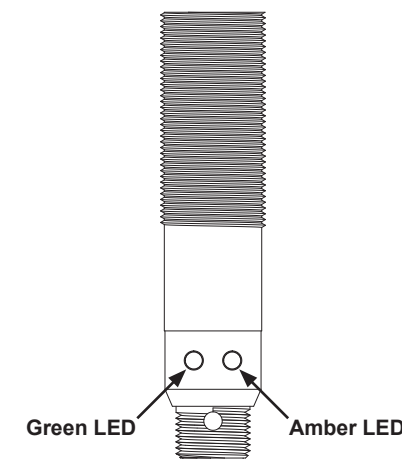
1. Ensure work area is barricaded and proper Lock Out/Tag Out procedures are performed during service.
2. Install sensors at specified location(s). Avoid mounting sensor eyes in direct sunlight for proper performance; some installations may require additional shielding (provided by others).
 - Kits require the installer to drill and install mounting hardware provided by others. Refer to corresponding print for any given kit number.
 - Forklift Sensor Kits can be mounted directly to pre-drilled holes in separately purchased Allied Solutions Track Guard LS. Refer to Track Guard LS Owner's/User's Manual for instructions.
3. Connect sensor wires to appropriate terminals in iDock control box. Refer to iDock wiring diagram supplied with control panel for information.
4. Restore power to equipment and verify operation of sensors:
 - Kit 7155-0007 sensor will illuminate a dim red light when powered and a bright red light when an object is detected. To adjust sensor detection range, follow instructions on print 7155-0007.
 - All other kit sensors will illuminate a green light when powered and an amber light when the sensor is detecting its own reflection. If amber light is flashing, adjust sensor as needed until light is steady on.



7155-0007 sensor

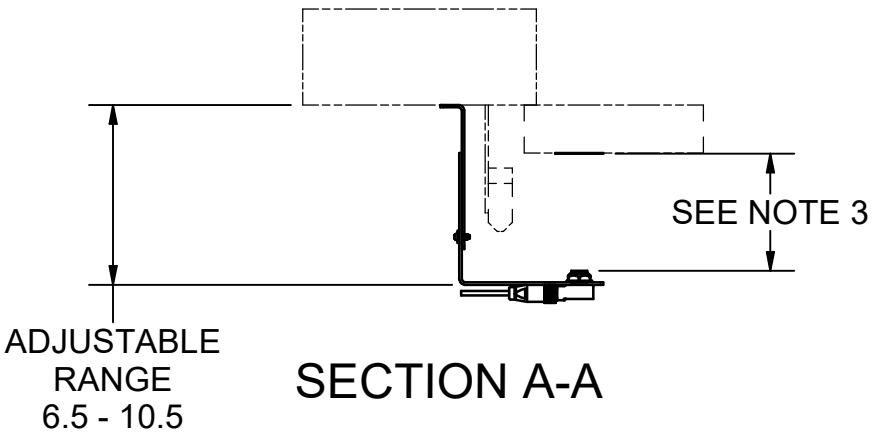
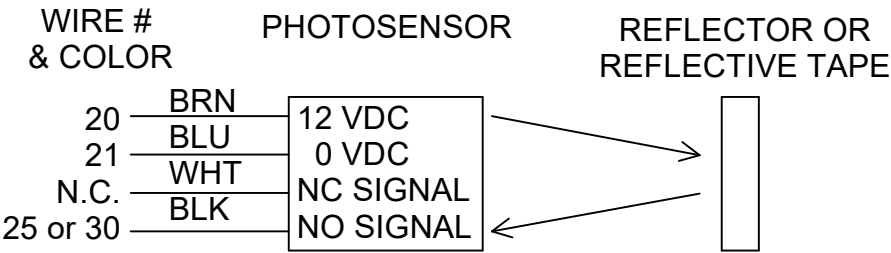


7155-0008 and 7155-0011 sensors



7155-0009 and 7155-0010 sensors

- NOTES:
1. HARDWARE TO MOUNT BRACKET TO WALL IS SUPPLIED BY OTHERS.
 2. LOCATE BRACKET AND SENSOR ON SAME SIDE OF THE DOOR OPENING AS THE CONTROL PANEL TO ENSURE SUFFICIENT CABLE LENGTH.
 3. ADJUST BRACKET AND SENSOR TO PROVIDE 3" OF CLEARANCE MINIMUM FROM THE FACE OF THE SENSOR TO THE OVERHEAD DOOR PANEL OR ROLL UP DOOR.
 4. DOOR PANEL MUST BE PROPERLY CLEANED BEFORE APPLYING REFLECTIVE TAPE TO ENSURE PROPER ADHESION.
 5. WITH DOOR FULLY CLOSED AND SENSOR IS POWERED ON, POSITION REFLECTIVE TAPE IN FRONT OF SENSOR. PROPER POSITION IS INDICATED BY A STEADY AMBER LIGHT ON THE SENSOR. APPLY REFLECTIVE TAPE TO THE DOOR PANEL.
 6. ELECTRICAL CONNECTIONS TO THE CONTROL PANEL:
 - BRN - TERMINAL STRIP 20
 - BLU - TERMINAL STRIP 21
 - WHT - NOT CONNECTED
 - BLK - SMALL TERMINAL BOARD DC INPUT 4 -TERMINAL 30 (WIRE #25)
 - LARGE TERMINAL BOARD DC INPUT 9 -TERMINAL 52 (WIRE #30)



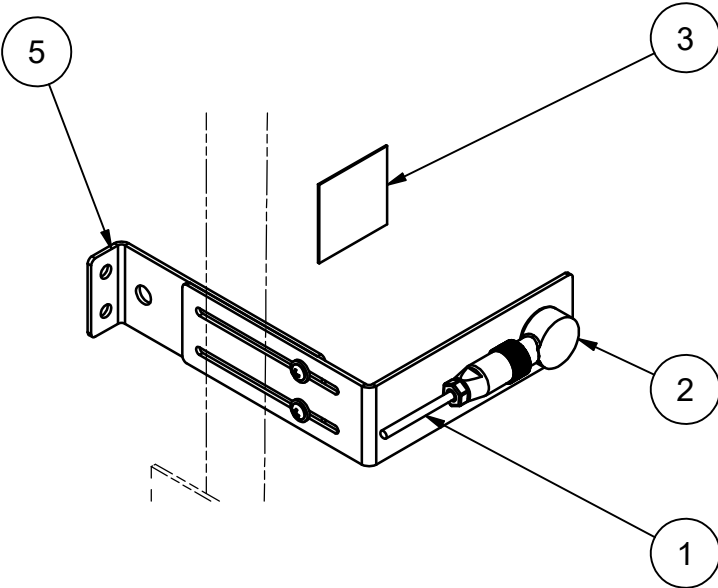
SECTION A-A

BILL OF MATERIAL				
ITEM	QTY	PART NO.	DESCRIPTION	SIZE
1	1	0961-0648	CABLE,5M LG,M12 PLUG	FLYING LEADS, 22/4 AWG, 30 V
2	1	0961-0657	PHOTOSENSOR, RETROREFLECTIVE ANGLD,	M18,METAL,10-30VDC
3	1	0961-0661	TAPE, RETROREFLECTIVE	2" X 2"
4	1	1026-0005	INSTALLATION INSTRUCTIONS	IDOCK SENSOR KITS
5	1	3053-0011	DOOR SENSOR BRACKET ASSEMBLY	


* NOT SHOWN

6.00 MIN.
TO TOP OF
DOOR WHEN
FULLY CLOSED

CONTROL PANEL



A	21-003	12/30/2020	0961-0661 SIZE 2X2 WAS 1X2
-	19-112	10/23/2019	INITIAL RELEASE

<div><div>POWERAMP MCGUIRES DLM</div><div>SYSTEMS</div><div>Loading Dock Equipment</div></div>			
KIT, DOOR CLOSE SENSOR 12 VDC,BRKT,TAPE AND CABLE			
MATERIAL		STOCK NO.	
DRAWN BY JCS		CHECKED BY	DATE 10/23/2019
TOLERANCES (UNLESS OTHERWISE NOTED)		DRAWING NO.	
FRACTIONAL: ± 1/32"		7155-0011	
DECIMAL: .00 = ± .01" .000 = ± .005"			
ANGULAR: ± 1°			

This print is the property of Systems, LLC and represents a proprietary article in which Systems, LLC retains any and all patent and other rights, including exclusive rights of use and/or manufacture and/or sale. Possession of this print does not convey any permission to reproduce, print or manufacture the article or articles shown therein, such permission to be granted only by written authorization signed by an officer or other authorized agent of Systems, LLC thereof.

ALL DIMENSIONS ARE IN INCHES UNLESS OTHERWISE NOTED

This print is the property of Systems, LLC and represents a proprietary article in which Systems, LLC retains any and all patent and other rights, including exclusive rights of use and/or manufacture and/or sale. Possession of this print does not convey any permission to reproduce, print or manufacture the article or articles shown therein, such permission to be granted only by written authorization signed by an officer or other authorized agent of Systems, LLC thereof.

iDock Sensor Retrofit Kit • Installation Overview



Always read and understand the Owner's/User's Manual and become thoroughly familiar with the equipment and its controls before installing or operating equipment. **Failure to read and understand owner's/user's manual may result in voiding of warranty, damage to equipment, death or serious injury!**

iDock controllers with a 7141-0360 Expansion Board installed can retrofit sensors with a program update (via main board exchange or SD card update as required) and the following kit(s):

Fluid Sensor Retrofit Kits

Fluid Sensor Kit Options	
Part Number	Description
7155-0001	Kit, Fluid Sensor, Plastic Reservoir
7155-0002*	Kit, Fluid Sensor, Cookpot Reservoir*

Note: Kits require the installer to provide field wiring (3-wire, 18-gauge minimum) between the fluid sensor and iDock controller to complete installation. Follow all local and applicable national electrical codes.

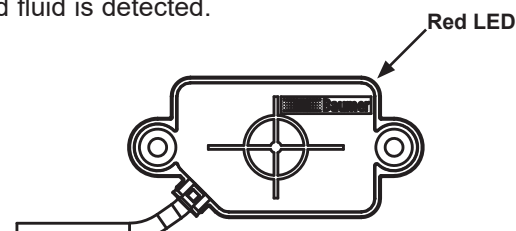
***Kit 7155-0002 additionally requires the installer to provide thread sealant tape and hydraulic fluid meeting or exceeding specification MIL-H-5606 to complete installation.**

Installation Overview

1. Ensure work area is barricaded and proper Lock Out/Tag Out procedures are performed during service.
2. Locate the hydraulic fluid reservoir of the motor/pump assembly where the sensor will be installed.
3. Install fluid level sensor to reservoir.
 - Units with plastic reservoirs have an externally mounted sensor that requires no disassembly to install. Refer to print 7155-0001.
 - Units with cookpot reservoirs require disassembly to install the provided pre-drilled reservoir and sensor. Refer to print 7155-0002. Use thread sealant tape where sensor enters reservoir. When assembly is complete, refill reservoir with appropriate amount of hydraulic fluid.
4. Connect fluid sensor wiring to electrical junction box in dock leveler pit or on wall near CentraPower unit.
5. Connect field wires to appropriate terminals in iDock control box. Refer to job-specific iDock wiring diagram for information as specific wiring may vary.
6. Restore power to equipment and verify operation of sensors:
 - Kit 7155-0001 sensor will illuminate a red light when powered and fluid is detected.
 - Kit 7155-0002 sensor will illuminate a blue light when powered and fluid is detected.



7155-0002 sensor



7155-0001 sensor

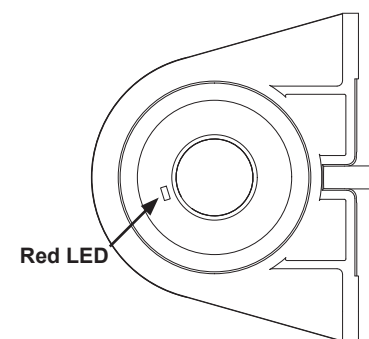
Other Sensor Retrofit Kits

Other Sensor Retrofit Kit Options	
Part Number	Description
7155-0007*	Kit, Vehicle Detection Assembly*
7155-0008*	Kit, Forklift Sensor Assembly
7155-0009	Kit, Leveler Stored Retrofit
7155-0010*	Kit, Door Open Sensor*
7155-0011*	Kit, Door Closed Sensor*

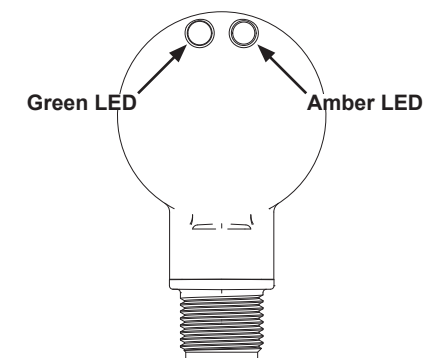
***Vehicle Detection Assembly, Forklift and Door Sensor kits require the installer to provide mounting hardware.**

Installation Overview

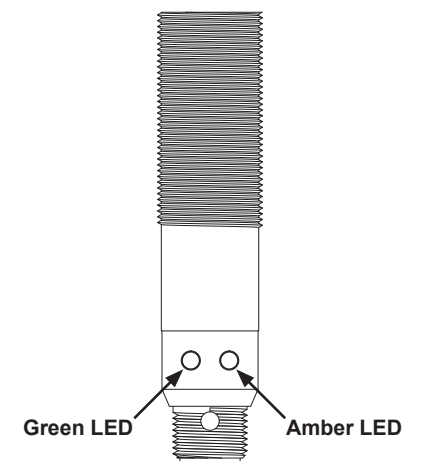
1. Ensure work area is barricaded and proper Lock Out/Tag Out procedures are performed during service.
2. Install sensors at specified location(s). Avoid mounting sensor eyes in direct sunlight for proper performance; some installations may require additional shielding (provided by others).
 - Kits require the installer to drill and install mounting hardware provided by others. Refer to corresponding print for any given kit number.
 - Forklift Sensor Kits can be mounted directly to pre-drilled holes in separately purchased Allied Solutions Track Guard LS. Refer to Track Guard LS Owner's/User's Manual for instructions.
3. Connect sensor wires to appropriate terminals in iDock control box. Refer to iDock wiring diagram supplied with control panel for information.
4. Restore power to equipment and verify operation of sensors:
 - Kit 7155-0007 sensor will illuminate a dim red light when powered and a bright red light when an object is detected. To adjust sensor detection range, follow instructions on print 7155-0007.
 - All other kit sensors will illuminate a green light when powered and an amber light when the sensor is detecting its own reflection. If amber light is flashing, adjust sensor as needed until light is steady on.



7155-0007 sensor



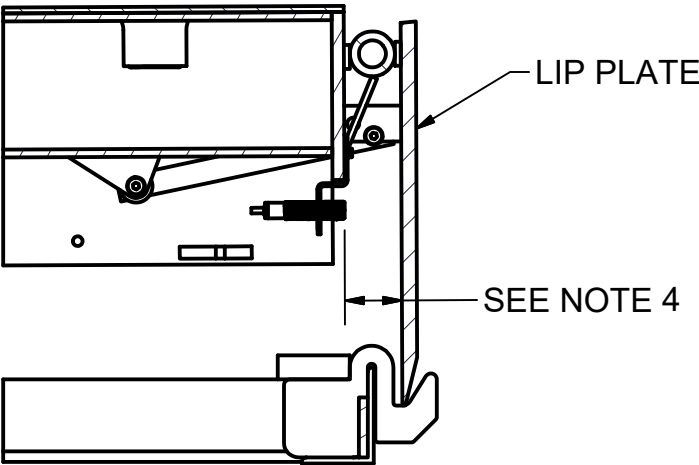
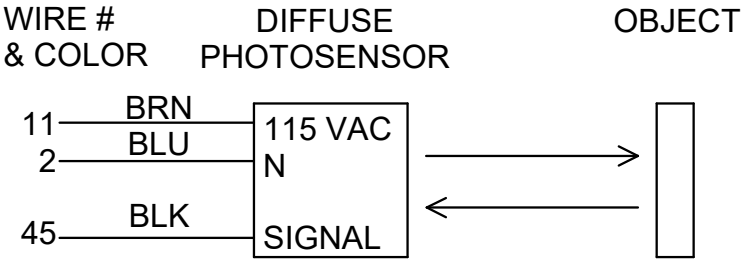
7155-0008 and 7155-0011 sensors



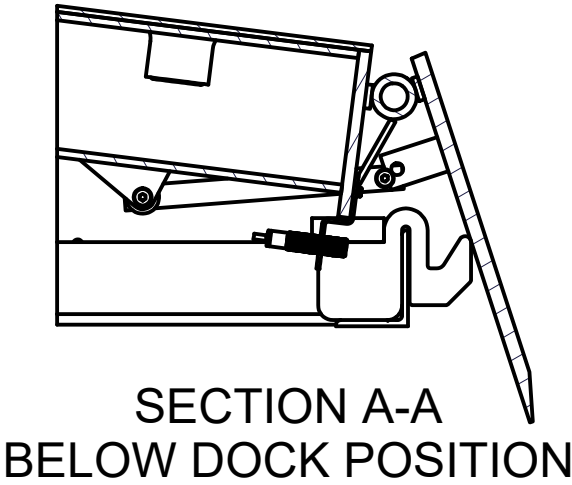
7155-0009 and 7155-0010 sensors

ELECTRICAL NOTES AND SCHEMATIC:

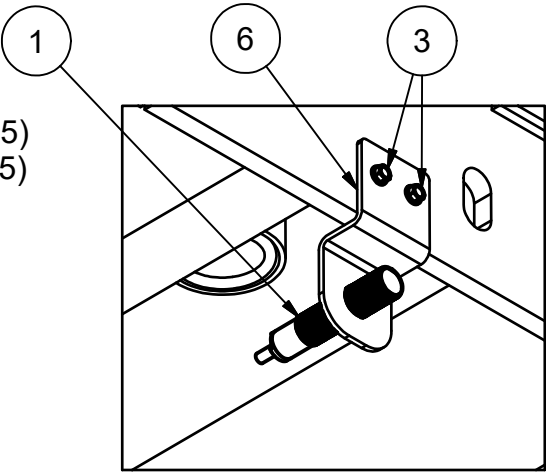
RED/BLK - TERMINAL STRIP 11
RED/WHT - TERMINAL STRIP 2
RED - SM. TERM. BRD HV INPUT 1 - TERM. 15 (WIRE #45)
- LG. TERM. BRD HV INPUT 1 - TERM. 23 (WIRE #45)



SECTION A-A
STORED POSITION

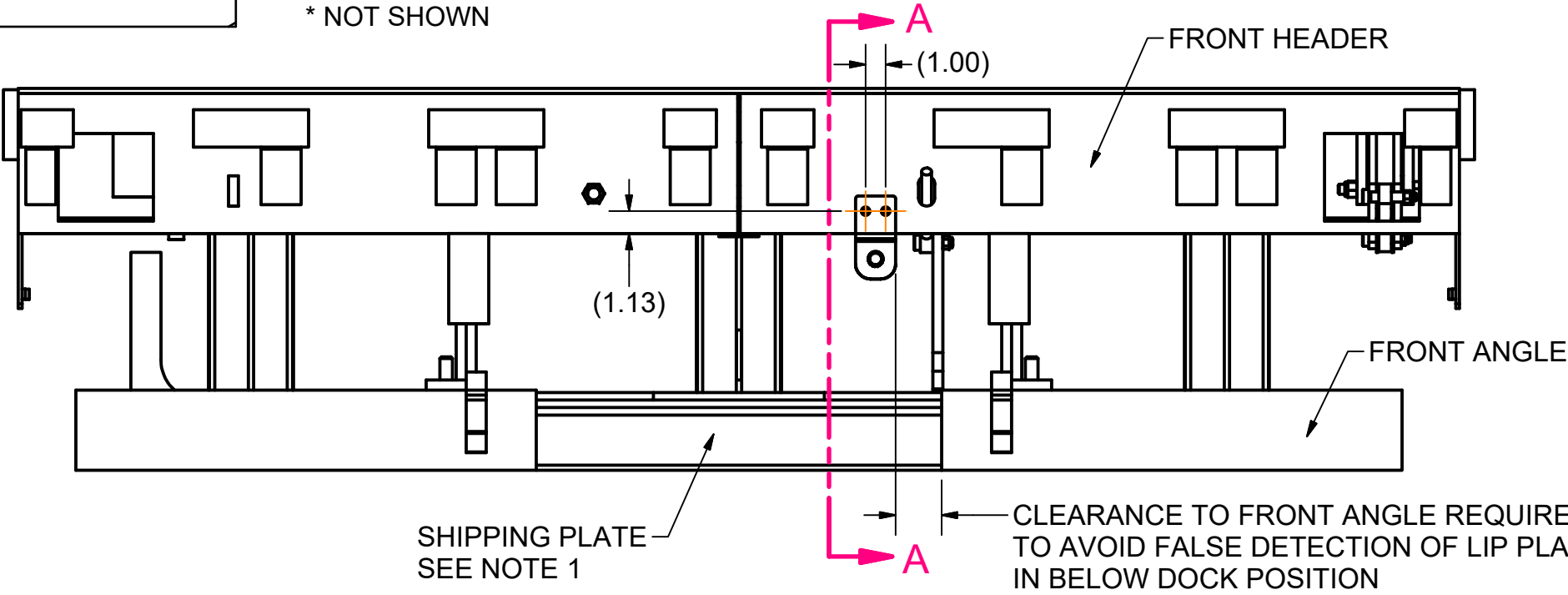


SECTION A-A
BELOW DOCK POSITION



BILL OF MATERIAL				
ITEM	QTY	PART NO.	DESCRIPTION	SIZE
1	1	0961-0383	PHOTO SENSOR,LIGHT OP	20-264VAC,3.94" DIST
2	1	1026-0005	INSTALLATION INSTRUCTIONS	IDOCK SENSOR KITS
3	4	2101-0105	SCREW,HWHMS,HEX WASHER HEAD,SELF-TAP	#12-24 UNC X 1.25,TEK#5
4	3	3051-0001	CABLE TIE	0.1X4,0.75
5	3	3051-0031	MTG BASE,CABLE TIE	4 WAY,ADHESIVE
6	1	3051-0328	MTG BRKT, LS RETRO FIT,FORMED	

* NOT SHOWN



NOTES:

1. SHIPPING PLATE ON THE FRAME MUST BE REMOVED TO AVOID FALSE DETECTION OF LIP PLATE IN BELOW DOCK POSITION.
2. LOCATE BRACKET ON FRONT HEADER SIMILAR TO AS SHOWN. SIDE TO SIDE LOCATION TO BE DETERMINED AT TIME OF INSTALL. ENSURE PROPER CLEARANCE TO LEVELER FRAME OR OTHER OBSTRUCTIONS WHEN IN BELOW DOCK POSITION.
3. CLAMP BRACKET TO FRONT TO USE AS TEMPLATE TO DRILL Ø.125 PILOT HOLES FOR MOUNTING HARDWARE. AVOID DRILLING INTO BEAMS ON BACK SIDE OF FRONT HEADER. REMOVE CLAMP AND SECURE BRACKET TO FRONT HEADER.
4. ADJUST SENSOR TO DETECT LIP PLATE IN STORED POSITION AND NOT ABLE TO DETECT LIP PLATE OR ANY OTHER OBJECT IN BELOW DOCK POSITION.
5. EXTRA SCREWS PROVIDED TO ENSURE BRACKET IS PROPERLY MOUNTED TO FRONT HEADER.
6. SENSOR CABLE WILL NEED TO BE ROUTED TO A J-BOX UNDER THE LEVELER. J-BOX NOT INCLUDED IN KIT.

ALL DIMENSIONS ARE IN INCHES
UNLESS OTHERWISE NOTED

-	JCS	10/15/2020	RELEASED TO BE ABLE TO SUBSTITUTE SENSOR AND CABLE FROM 7155-0009
KIT,LS RETROFIT,115 VAC, W/ BRACKET AND CABLE			
MATERIAL		STOCK NO.	
DRAWN BY JCS		CHECKED BY	DATE 10/15/2020
TOLERANCES (UNLESS OTHERWISE NOTED)		DRAWING NO.	
FRACTIONAL: ± 1/32"		7155-0012	
DECIMAL: .00 = ± .01"			
.000 = ± .005"			
ANGULAR: ± 1°		This print is the property of Systems, Inc. and represents a proprietary article in which Systems, Inc. retains any and all patent and other rights, including exclusive rights of use and/or manufacture and/or sale. Possession of this print does not convey any permission to reproduce, print or manufacture the article or articles shown therein, such permission to be granted only by written authorization signed by an officer or other authorized agent of Systems, Inc. thereof.	

iDock Sensor Retrofit Kit • Installation Overview



Always read and understand the Owner's/User's Manual and become thoroughly familiar with the equipment and its controls before installing or operating equipment. **Failure to read and understand owner's/user's manual may result in voiding of warranty, damage to equipment, death or serious injury!**

iDock controllers with a 7141-0360 Expansion Board installed can retrofit sensors with a program update (via main board exchange or SD card update as required) and the following kit(s):

Fluid Sensor Retrofit Kits

Fluid Sensor Kit Options	
Part Number	Description
7155-0001	Kit, Fluid Sensor, Plastic Reservoir
7155-0002*	Kit, Fluid Sensor, Cookpot Reservoir*

Note: Kits require the installer to provide field wiring (3-wire, 18-gauge minimum) between the fluid sensor and iDock controller to complete installation. Follow all local and applicable national electrical codes.

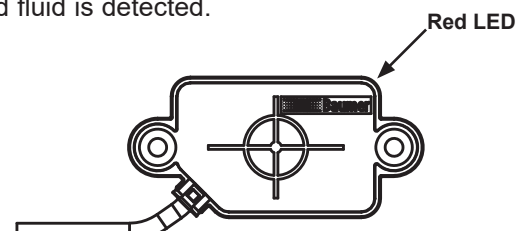
***Kit 7155-0002 additionally requires the installer to provide thread sealant tape and hydraulic fluid meeting or exceeding specification MIL-H-5606 to complete installation.**

Installation Overview

1. Ensure work area is barricaded and proper Lock Out/Tag Out procedures are performed during service.
2. Locate the hydraulic fluid reservoir of the motor/pump assembly where the sensor will be installed.
3. Install fluid level sensor to reservoir.
 - Units with plastic reservoirs have an externally mounted sensor that requires no disassembly to install. Refer to print 7155-0001.
 - Units with cookpot reservoirs require disassembly to install the provided pre-drilled reservoir and sensor. Refer to print 7155-0002. Use thread sealant tape where sensor enters reservoir. When assembly is complete, refill reservoir with appropriate amount of hydraulic fluid.
4. Connect fluid sensor wiring to electrical junction box in dock leveler pit or on wall near CentraPower unit.
5. Connect field wires to appropriate terminals in iDock control box. Refer to job-specific iDock wiring diagram for information as specific wiring may vary.
6. Restore power to equipment and verify operation of sensors:
 - Kit 7155-0001 sensor will illuminate a red light when powered and fluid is detected.
 - Kit 7155-0002 sensor will illuminate a blue light when powered and fluid is detected.



7155-0002 sensor



7155-0001 sensor

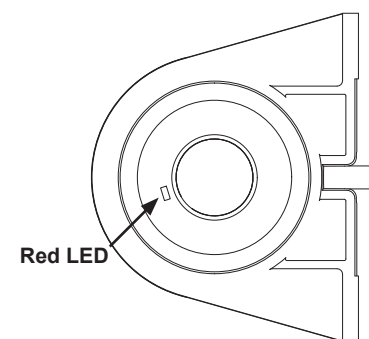
Other Sensor Retrofit Kits

Other Sensor Retrofit Kit Options	
Part Number	Description
7155-0007*	Kit, Vehicle Detection Assembly*
7155-0008*	Kit, Forklift Sensor Assembly
7155-0009	Kit, Leveler Stored Retrofit
7155-0010*	Kit, Door Open Sensor*
7155-0011*	Kit, Door Closed Sensor*

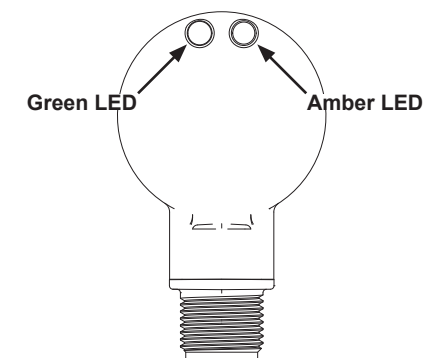
***Vehicle Detection Assembly, Forklift and Door Sensor kits require the installer to provide mounting hardware.**

Installation Overview

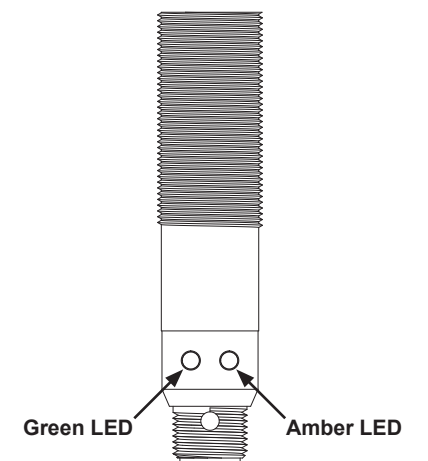
1. Ensure work area is barricaded and proper Lock Out/Tag Out procedures are performed during service.
2. Install sensors at specified location(s). Avoid mounting sensor eyes in direct sunlight for proper performance; some installations may require additional shielding (provided by others).
 - Kits require the installer to drill and install mounting hardware provided by others. Refer to corresponding print for any given kit number.
 - Forklift Sensor Kits can be mounted directly to pre-drilled holes in separately purchased Allied Solutions Track Guard LS. Refer to Track Guard LS Owner's/User's Manual for instructions.
3. Connect sensor wires to appropriate terminals in iDock control box. Refer to iDock wiring diagram supplied with control panel for information.
4. Restore power to equipment and verify operation of sensors:
 - Kit 7155-0007 sensor will illuminate a dim red light when powered and a bright red light when an object is detected. To adjust sensor detection range, follow instructions on print 7155-0007.
 - All other kit sensors will illuminate a green light when powered and an amber light when the sensor is detecting its own reflection. If amber light is flashing, adjust sensor as needed until light is steady on.



7155-0007 sensor



7155-0008 and 7155-0011 sensors



7155-0009 and 7155-0010 sensors